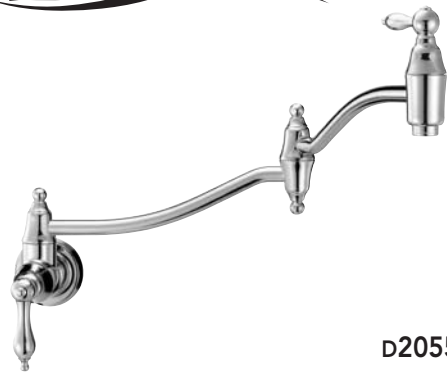


Danze®

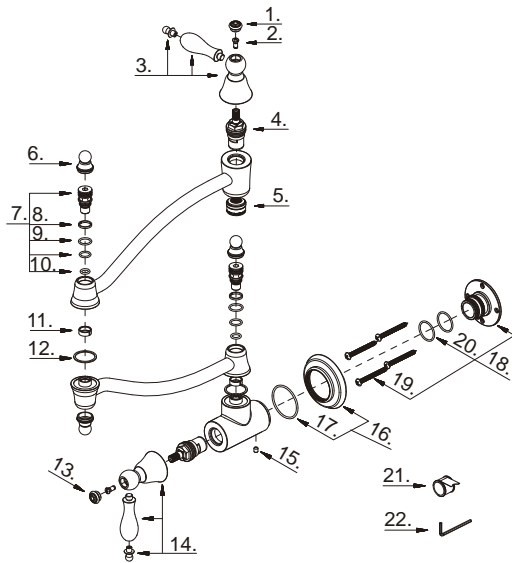


D205540

Deck Mount Pot Filler

Robinet á montage sur tablier pour remplissage de gros contenants

Grifo para cacerdas con montaje en el fregadero



D205540 (V2)

Illustrated Parts List Liste de pièces illustrée Lista ilustrada de partes

Replacement parts, call :
Les pièces de rechange, appelez :
Partes de reemplazo, llame :

1-888-328-2383
WWW.DANZE.COM

| Model # | Finishes | Fini | Acabado |
|------------|-------------------|------------------------|---------------------------|
| D205540 | Chrome | Chrome | Cromo |
| D205540DN | Distressed Nickel | Nickel décoloré | Níquel añejado |
| D205540RB | Oil Rub Bronze | Bronze poncé à l'huile | Bronce lustrado al aceite |
| D205540SS | Stainless Steel | Acier Inoxydable | Acero Inoxidable |
| D205540RBD | Distressed Bronze | Bronze Décoloré | Bronce Añejado |

| Part Name | Nom de la pièce | Nombre de Partie | Part # # de pièce # de Parte |
|---|--|---|------------------------------------|
| 1°. Handle Cap | Capuchon de la manette | Tapón | A206844 |
| 2. Screw (3/16 - 24 * 7/16" L) | Vis (3/16 - 24 * 7/16 po L) | Tornillo (3/16 - 24 * 7/16 pulg. L) | A008283 |
| 3°. Metal Handle Assembly | Assemblage de manette en métal | Ensamblaje de manija metálicas | A602698 |
| 4. Ceramic Disc Cartridge | Cartouche à disque en céramique | Cartucho de disco cerámico | A507375N |
| 5°. Aerator | Brise-jet | Aireador | A500550N-50 |
| 6°. Spout Finial | Capuchon de bec | Remate del grifo | A057561 |
| 7. Spout Connector | Raccord de bec | Conector del grifo | A603713N |
| 8. O-Ring (Ø1/2" ID * Ø5/8" OD) | Joint torique (Ø1/2 po ID * Ø5/8 po OD) | Empaque circular (Ø1/2 pulg. ID * Ø5/8 pulg. OD) | A004032N |
| 9. O-Ring (Ø7/16" ID * Ø9/16" OD) | Joint torique (Ø7/16 po ID * Ø9/16 po OD) | Empaque circular (Ø7/16 pulg. ID * Ø9/16 pulg. OD) | A004023N |
| 10. O-Ring (Ø5/16" ID * Ø1/2" OD) | Joint torique (Ø5/16 po ID * Ø1/2 po OD) | Empaque circular (Ø5/16 pulg. ID * Ø1/2 pulg. OD) | A004031N |
| 11. Clip | Collier | Seguro | A013651 |
| 12. Washer | Rondelle | Arandela | A013598 |
| 13°. Handle Cap | Capuchon de la manette | Tapón | A206843 |
| 14°. Metal Handle Assembly | Assemblage de manette en métal | Ensamblaje de manija metálicas | A602699 |
| 15. Fastening Screw | Vis de fixation | Tornillo de fijación | A075209 |
| 16°. Flange | Bride | Brida | A607391 |
| 17. O-Ring (Ø1-9/16" ID * Ø1-11/16" OD) | Joint torique (Ø1-9/16 po ID * Ø1-11/16 po OD) | Empaque circular (Ø1-9/16 pulg. ID * Ø1-11/16 pulg. OD) | A004520 |
| 18. Mounting Bracket | Support de fixation | SopORTE de montaje | A603523N |
| 19. Screw (ST4.8 * 50mm L) | Vis (ST4.8 * 50mm L) | Tornillo (ST4.8 * 50mm L) | A008745 |
| 20. O-Ring (Ø13/16" ID * Ø1" OD) | Joint torique (Ø13/16 po ID * Ø1 po OD) | Empaque circular (Ø13/16 pulg. ID * Ø1 pulg. OD) | A048033N |
| 21. Pipe Tape | Ruban pour tuyau | Cinta selladora para rosca | A203000 |
| 22. Hex Wrench (H2.5 * 19 mm L * 53 mm L) | Clé hexagonale (H2.5 * 19 mm L * 53 mm L) | Llave hexagonal (H2.5 * 19 mm L * 53 mm L) | A031000 |