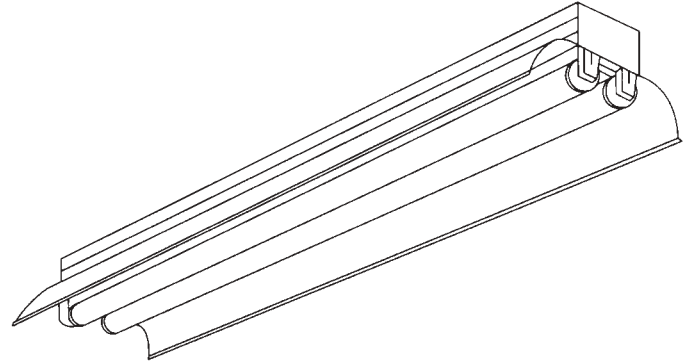
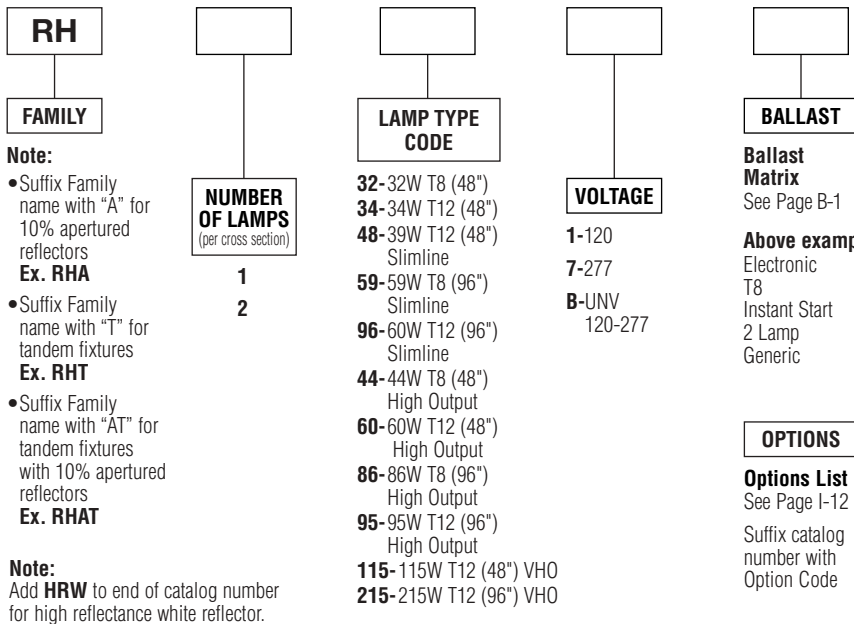


Premium Industrial (RH)



ORDERING INFORMATION

Catalog Number: Example: RH2591Q2Y



Note:

- Suffix Family name with "A" for 10% apertured reflectors
Ex. RHA
- Suffix Family name with "T" for tandem fixtures
Ex. RHT
- Suffix Family name with "AT" for tandem fixtures with 10% apertured reflectors
Ex. RHAT

Note:
Add **HRW** to end of catalog number for high reflectance white reflector.

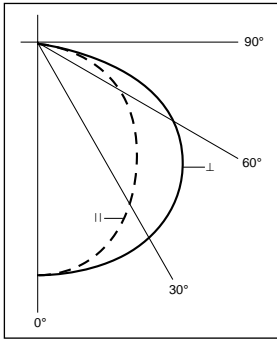
PRODUCT FEATURES

- Deep-grooved channel housing for extra strength and stability allows use of slide grip hangers.
- Die-formed 4 ft. reflector with transverse ribbing for structural stability.
- Quick-release quarter-turn fasteners provide ease of installation and maintenance.
- Combination end plate/coupler assures integrity of row alignment. (Heavy-duty 10" coupler available).
- UL Damp Location labels are standard with this series.

PRODUCT AVAILABILITY

FAMILY	NOMINAL SIZE	NUMBER OF LAMPS (per cross section)	NUMBER OF LAMPS (per fixture)	LAMP TYPE CODE	LENGTH	WIDTH	HEIGHT
RH	4'	2	2	32, 34	48"	10 "	4 13/16"
RHA		2	2	48			
		2	2	44, 60			
		2	2	115			
RH	8'	1	1	59, 96	96"	10 "	4 13/16"
RHA		2	2	59, 96			
		1	1	86, 95			
		2	2	86, 95			
		2	2	215			
RHT	8'	1	2	32, 34	96"	10 "	4 13/16"
		2	4	32, 34			
RHT	16'	1	2	59, 96	192"	10 "	4 13/16"
		1	2	86, 95			
RHAT	8'	1	2	32, 34	96"	10 "	4 13/16"
		2	4	32, 34			
RHAT	16'	1	2	59, 96	192"	10 "	4 13/16"
		1	2	86, 95			

Two-Lamp Photometric Data



Coefficients of Utilization

Floor Cavity Reflectance 0.20

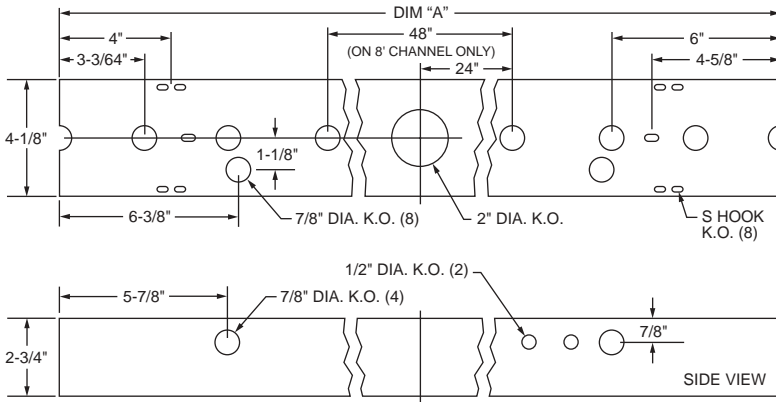
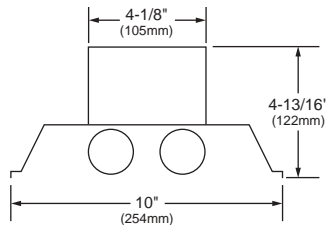
Room Cavity Ratio	RC RW	80%			50%			10%		
		50	30	10	50	30	10	50	30	10
1	91	88	84	86	83	81	78	76	75	
2	80	74	69	75	70	66	68	65	62	
3	70	63	57	66	60	56	60	56	53	
4	62	54	48	58	51	46	54	49	45	
5	54	45	39	50	44	39	48	43	39	
6	47	39	34	45	38	33	42	37	33	
7	42	34	29	40	34	29	38	32	28	
8	38	30	25	36	29	25	34	28	24	
9	34	26	21	33	26	21	31	25	21	
10	31	23	19	30	23	18	28	23	19	

SPECIFICATIONS

Housing is die-formed of cold-rolled steel and grooved along its entire length for strength and rigidity. Four foot reflectors are formed with transverse ribbing for structural uniformity. Quick-release quarter-turn fasteners secure all reflectors. All metal components are phosphate coated and finished in baked white enamel providing a minimum reflectance factor of 85%. All fixtures include combination end plate/couplers. Each unit is equipped with high power factor Class "P" ETL-CBM ballasts (120 volt 60 Hz is standard). Fixtures are UL-listed and bear union and UL labels.

DIMENSIONS

All KOs are 7/8" dia. unless otherwise specified.



DIM "A"	
4' FIXTURE	(1219mm) 48"
8' FIXTURE	(2438mm) 96"

NOTE: Do not flush mount HO or PG (VHO) units. HO units should be suspended minimum 1-1/2" from surface. PG units should be suspended minimum 6" from surface.

Dimensions and specifications subject to change without notice.