

FEATURES & SPECIFICATIONS

INTENDED USE

Specification grade fixture, sealed aluminum extrusion with lens for outdoor applications. The OSL series is a durable fixture used in both parking and commercial / retail outdoor areas for sign and walkway lighting.

SIZE W x L x H in inches (mm)

5.25W x 3.06H (135 x 75)

Available in 48 and 96in nominal lengths. See dimensional view for

LAMP

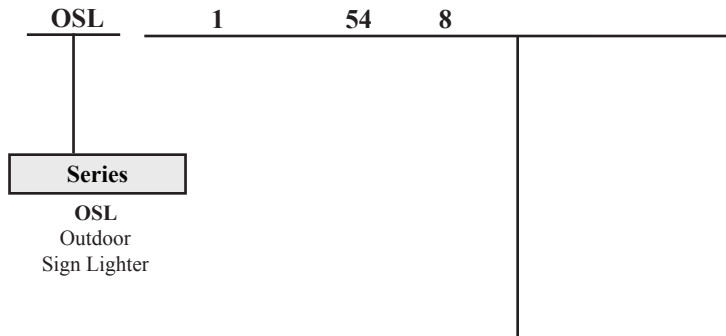
1 or 2 lamp position.

MATERIALS & FEATURES

Aluminum extrusion with white interior and cast aluminum end plates. The diffuser / lens is a smooth clear acrylic. Available in 4 and 8 foot nominal lengths; single and tandem lamp configurations available with four foot lamps. Integral ballast for 54W T5HO lamp configurations; remote ballast for T12HO lamps. Integral junction box on one end of fixture permits wiring connection within enclosure.

- Fixtures may be coupled for continuous runs without additional accessories
- Sign lighters rotate up to 360 degrees

ORDERING INFORMATION



Lamp Count	Lamp Type [1] & Tandem Code [2]	
------------	---------------------------------	--

1 or 2	54	46 in. T5 4 ft. nominal length
1 or 2	54	8 46 in. T5HO Slimline 8ft. Tandem (2 lamp positions total)
1 or 2	32	48 in. T8
T5HO Fixtures have INTEGRAL BALLAST Tandem fixture doubles total lamp count (2 or 4)		
1	F48T12HO	48 in. T12HO 4 ft. nominal length
1	F96T12HO	96 in. T12HO 8 ft. nominal length
T12HO Fixtures have REMOTE BALLAST Tandem fixture doubles total lamp count (2 or 4)		

Tandem fixture doubles total lamp count (2 or 4).

MOUNTING

Fixtures are typically mounted on conduit.

LISTING

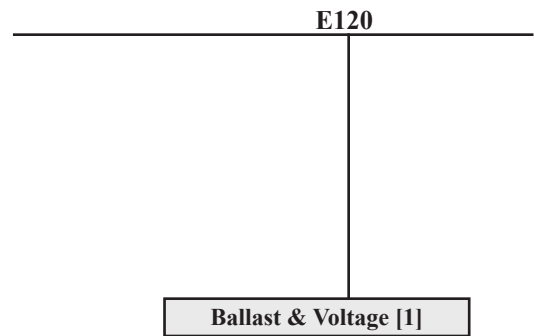
Fixture and Ballast: UL Listed.

Ballast: Thermally protected, class P, HPF, Non PCB.

TYPICAL OPTIONS AND ACCESSORIES

See options page at the end of the T02HARSH section, or contact factory for more details.

Example: OSL 154 8 E120



Ballast & Voltage [1]	
-----------------------	--

E120	Electronic, 120V
E277	Electronic, 277V
MV	Electronic, Multivolt (120-277)

Notes

- [1] See end of T02Harsh section for many additional lamps, ballasts, finishes, and options.
- [2] Tandem doubles length and lamp count. Same lamps in cross section, additional lamps end to end.

Catalog Number:
Notes:

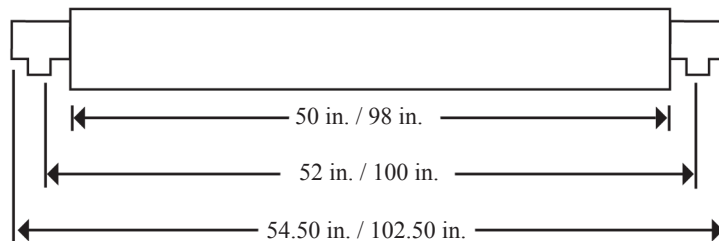
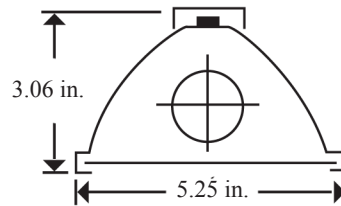
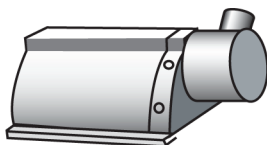
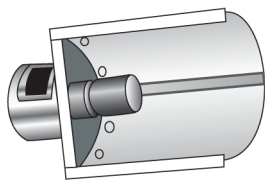
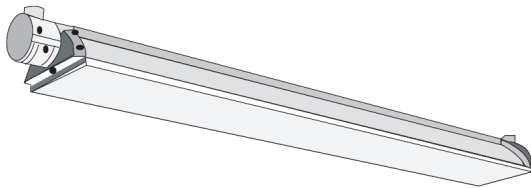
Series OSL

Outdoor Sign Lighter



DIMENSIONS

All dimensions are inches. Specifications subject to change without notice. The dimensions below represent the 2 ft. and the 4 ft.



T02 HARSH

Catalog Number:
Notes: