



Series: PK600LED

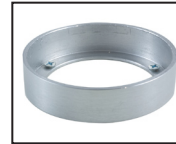
Model Number(s): PK604LED30 / PK604LED40 / PK604LED65

Fixed LED Round Slim Disk – Three Lamp – 3W High-Output LEDs

Designed for high efficiency, low wattage, shelf and cabinet display lighting solutions.



Fixtures may be surface or recessed mounted



PK H600C (Order separately)
Aluminum housing for surface mount
2-3/4" Ø x 3/4" H

Product Specifications

- Description:** 3 x 1W LED 350mA with 38° lens
- Driver:** Includes a 120V 3W electronic LED driver
- Wiring:** 72" teflon insulated lead wire
- Color Temperature:** **30** Warm White at 3000K / **40** Standard White at 4000K / **65** Cool White at 6500K
- Housing Dimensions:** 3" Ø x 7/8" H x 3/16" EXT
- Materials:** Machined aluminum.
- Finish:** BA – Brushed aluminum
- Custom Finishes:** Consult factory
- Listings:** IP65 – suitable for wet locations
- Light Output:** 45 lumens per lamp with 135 total lumen output
- Foot Candles:** At 24" a 40Fc center with 20Fc measured at edges of 1'-0" Ø

Installation

Surface Mount:

- a. Simply secure housing ring on the surface where the disk light will be installed with the screw-sets provided (housing order separately).
- b. Mount the disk light into the ring.

Recessed Mount:

- a. Cut a hole of 2-3/8" Ø on the surface where the disk light will be installed.
- b. Mount the disk light in the pre-drilled hole.

LED Output Compared to Incandescent

Each high output LED consumes only 1-watt of power, producing far more light per watt than any incandescent light source, offering a substantial reduction in energy cost, and greatly reducing heat produced, protecting the finish of the woodwork it is installed in. By using truly advanced technology LEDs in our fixtures, the average lamp life is now 50,000 hours. This greatly reduces the need for lamp replacement, therefore significantly lowering maintenance and operating cost over the years. LED fixtures do not contain harmful chemicals such as mercury. With virtually no ultra violet (UV) radiation and low heat emission.

Product Applications

- Residential kitchen counter and cabinet light
- Retail counter display
- Retail shelving, showcases and built-in display stands
- Restaurant bar and reception
- Hotel counter and shelf display
- Trade show and exhibition lighting
- Nurse station work area
- Office product and award displays
- Display accents in museums and corporate display areas
- Residential and commercial closet spaces
- Exhibition and trade show booths

Note: Use only the LED driver provided. See LED Driver spec. sheet for other drivers configurations.

Submittal Information for Specifier Use:

Job Name:	Date:
Specification Type:	Job Location:
Drawing Location of Fixture Type:	Approval:
Specifier Name:	Sales Agency Contact:
Contact Number:	Contact Number:



JESCO LED, LLC.

A Jesco Lighting Group Company

66-25 Traffic Ave, Glendale, NY 11385 **Tel:** 718.366.3211 **Fax:** 718.366.3646

1100 Hatcher Ave, Suite A, City of Industry, CA 91748 **Tel:** 626.854.8168 **Fax:** 626.854.8172

www.jescoled.com