

Bath Options

Water Heater and Level Sensor

Inline Heater

Inline water heating systems are available for soaking tubs, whirlpools and air baths manufactured by MTI Whirlpools. These systems use electricity to maintain bath water heat, not to heat cold water. The thermostat for these systems is pre-set by the manufacturer to maintain bath water temperature at 102° Fahrenheit, so the bather can enjoy his / her bath longer.

For Whirlpools

The inline heating system for whirlpools is activated when the pump is turned on, with the jetted water being heated. No external switch is needed. 2 different heaters are available:

- A 650-watt inline heater is available for MTI Classic Series tubs with the Enhanced Therapy Package and requires 5.5 amps on a 110 VAC GFCI protected circuit. Used in conjunction with a 2 bhp pump with the Enhanced Therapy Package, a 20 amp, 110 VAC GFCI protected circuit is required. Ultra-Therapy packages with air systems are only available with a 650-watt heater.
- A 1500-watt inline heater is available for MTI Classic and Designer Series baths (standard on most Ultra-Therapy Packages and some Standard- and Premium-Therapy Packages.) The 1500-watt heater draws 12 amps, so a separate 15 amp, 110 VAC circuit is required. This circuit must be connected to a supply that is protected by a ground fault circuit interrupter (GFCI).

For Soakers and Air Baths

The inline heating system for soaking tubs and air baths is manually activated by an On / Off switch. This system gently recirculates the bath water through the inline heater, with negligible disturbance to the water. This system uses the 1500-watt inline heater described above and a 1/2 hp pump. Not available for freestanding tubs.

Low-Water Sensor Operation for Classic and Designer Series

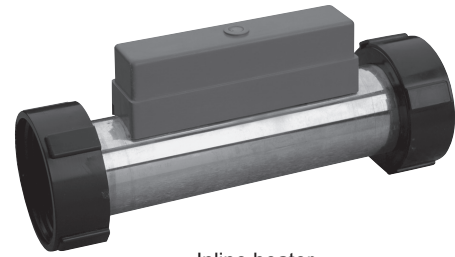
- The automatic water level control prevents the whirlpool pump from operating when there is insufficient water in the tub.
- A sensor is mounted on the tub approximately 1" above the highest jet. If the tub is not filled up to this level, the pump will not operate.
- Likewise, if the water drops below this level, the pump will automatically shut off.

For Classic Series

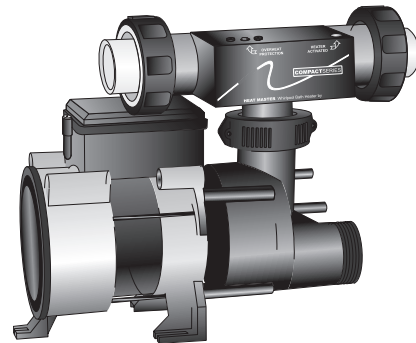
- The sensor operates on a 10-minute timer. It is provided with a 3' grounded power supply cord that is not to be altered.
- Before enclosing the unit, be sure to check that the sensor is secured to the tub.
- The red indicator light on the sensor should come on when the tub is filled above the level of the sensor.
- If this light does not come on when the tub is filled, adjust the dial on the sensor until it comes on.
- The drawing shows the typical installation procedure for the Low-Water Sensor.
- Electrical requirements: 1 amp, 110 VAC.

For Designer Series

- 20 minute timer is standard.



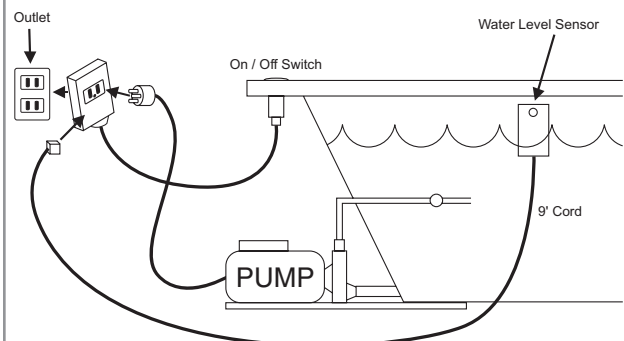
Inline heater



Inline heater connected to the standard pump



For soakers and air baths, the water is drawn in through an intake such as the one shown, flows through the inline heater and is reintroduced into the bath through an output that has the same appearance and is mounted opposite it.



Classic Series Schematic