

DESCRIPTION

IC AIR-TITE™ fixture for use with H3 3" series trims. Housing is AIR-TITE with supplied gasket and prevents airflow between heated or air conditioned spaces and unconditioned attic areas. For use with 12V MR16 lamps.

H38LVICAT is IC rated and may be used in insulated ceilings and be covered with insulation material.

Catalog #		Type	
Project			
Comments		Date	
Prepared by			

DESIGN FEATURES

Housing

IC and AIR-TITE rated double wall aluminum construction.

Plaster Frame

Housing adjusts in plaster frame to accommodate up to 1-1/2" ceiling thickness. Galvanized steel construction.

Plaster frame features include:

- Regressed locking screw for securing hanger bars.
- Cutouts for easily crimping hanger bars in position.
- Halo name embossed on plaster frame. The housing may be removed from plaster frame to provide access to the junction box.

Junction Box

- UL Listed for through branch circuit wiring (4 No. 12ga., 90°C conductors).
- Four 1/2" trade size conduit knockouts with true pry-out slots are positioned to accommodate straight conduit runs.
- Three Slide-N-Side™ wire traps allow non-metallic sheathed cable to be installed without tools and without removing knockouts. Accepts

a wide range of non-metallic sheathed cable.

- Allows wiring connections to be made outside the junction box

- Simply insert the cable directly into the trap after connections are made.

- Accommodates the following standard non-metallic sheathed cable sizes:

(US) #14/2, #14/3, #12/2, #12/3
(Canada) #14/2, #14/3, #12/2

Got NAIL!™ Bar Hangers

- Pre-installed nail easily installs in regular lumber, engineered lumber and laminated beams.
- Safety and guidance system prevents snagging, ensures smooth straight nail penetration and allows bar hangers to be easily removed if necessary.
- Automatic levelling flange aligns the housing and lets you hold the housing in place with one hand while driving nails.
- Housing can be positioned at any point within 24" joist span
- Pass-N-Thru™ feature allows bar hangers to be shortened without removing from plaster frame.

• Score lines allow "toolless" shortening for 12" joists.

• Bar hangers may be repositioned 90°.

• Integral T-bar clip snaps onto T-bars - no additional clips required.

Transformer

Integral transformer steps 120V line voltage down to 12V lamp operating voltage.

Socket

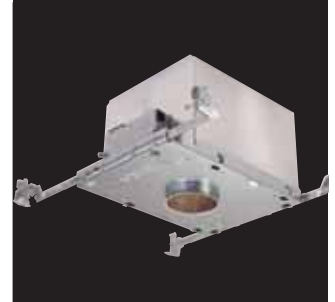
GU5.3 socket for 12V MR16 lamps.

Labels

- UL/cUL Listed
- Damp Location Listed
- UL listed for Feed Through
- UL listed for Direct Contact with Insulation and combustible material

Meets following requirements:

- State of California Title 24
- Washington State Energy Code
- International Energy Conservation Code (IECC)
- New York State Energy Conservation Construction Code
- Certified Under ASTM-E283



H38LVICAT

3" IC AIR-TITE™
Recessed Housing
12V MR16

3" TRIMS



**FOR USE IN
INSULATED CEILINGS**

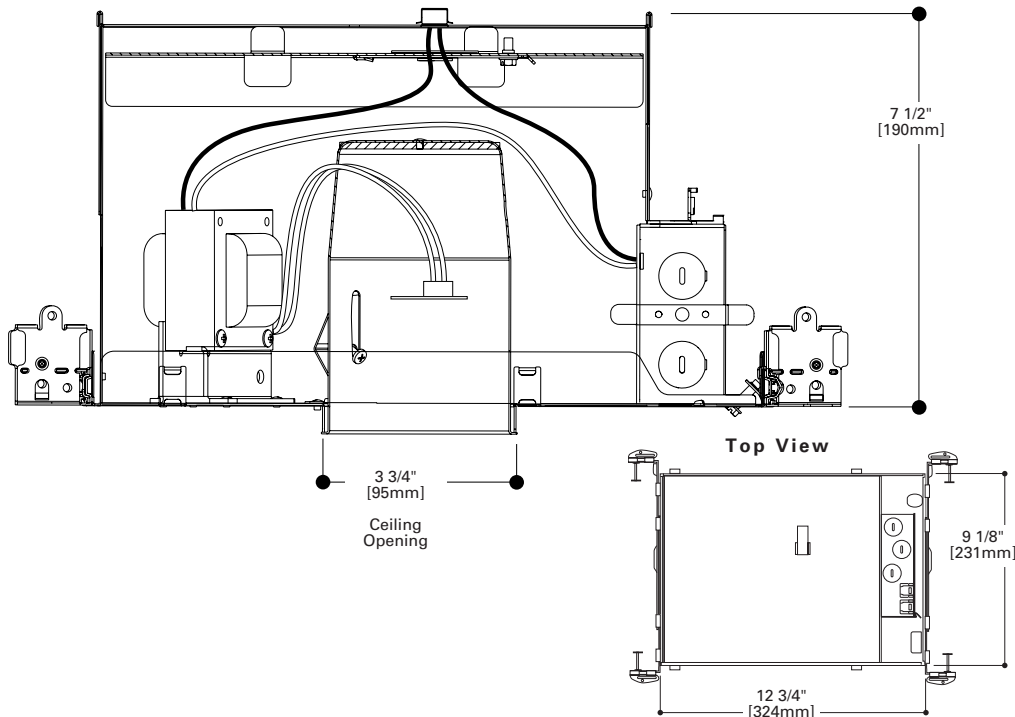
**CAN BE COVERED
WITH INSULATION**

airtite™
with all trims listed



FEATURES:

- SLIDE-N-SIDE™ JUNCTION BOX
- GOT NAIL!™ BAR HANGERS
- PASS-N-THRU™ BAR HANGERS
- REGRESSED LOCKING SCREW
- HALO ID ON PLASTER FRAME



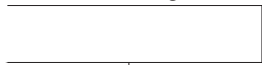
TRIMS

ORDERING INFORMATION

SAMPLE NUMBER: H38LVICAT-3001WHBB

Order housing, trim and accessories separately.

Housing

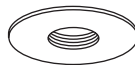


H38LVICAT=3" IC, AIR-TITE™
Small Aperture Low
Voltage MR16
Housing

Trims



Note: Consult individual trim specification sheets for additional information and color views



3001

Adjustable Pinhole Baffle**37W 12V MR16**

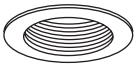
3001WHBB=White with Black Baffle
3001BKBB=Black with Black Baffle
3001SNBB=Satin Nickel with Black Baffle
3001ACBB=Antique Copper with Black Baffle
3001TBZBB=Tuscan Bronze with Black Baffle
OD: 4 1/4" (108mm)



3002

Adjustable Pinhole Reflector**37W 12V MR16**

3002WHC=White with Clear Reflector
3002BKC=Black with Clear Reflector
3002SNC=Satin Nickel with Clear Reflector
3002ACC=Antique Copper with Clear Reflector
3002TBZC=Tuscan Bronze with Clear Reflector
OD: 4 1/4" (108mm)



3003

Adjustable Baffle**50W 12V MR160**

3003WHBB=White with Black Baffle
3003WHWB=White with White Baffle
3003BKBB=Black with Black Baffle
3003SNB=Satin Nickel with Satin Nickel Baffle
3003ACB=Antique Copper with Antique Copper Baffle
3003TBZB=Tuscan Bronze with Tuscan Bronze Baffle
OD: 4 1/4" (108mm)



3004

Adjustable Reflector**50W 12V MR16**

3004WHC=White with Clear Reflector
3004BKC=Black with Clear Reflector
3004SN=Satin Nickel with Satin Nickel Reflector
3004AC=Antique Copper with Antique Copper Reflector
3004TBZ=Tuscan Bronze with Tuscan Bronze Reflector
OD: 4 1/4" (108mm)



3005

Crossblade Reflector**50W 12V MR16**

3005WHC=White with Clear Reflector
3005BKCB=Black with Clear Reflector
OD: 4 1/4" (108mm)



3006

Adjustable Slot Aperture**37W 12V MR16**

3006WHBB=White with Black Baffle
3006BKBB=Black with Black Baffle
3006SNBB=Satin Nickel with Black Baffle
3006ACBB=Antique Copper with Black Baffle
3006TBZBB=Tuscan Bronze with Black Baffle
OD: 4 1/4" (108mm)



3007

Regressed Lens Showerlight - wet location listed**37W 12V MR16**

3007WHC=White with Clear Reflector
3007PCC=Polished Chrome with Clear Reflector
3007SN=Satin Nickel with Satin Nickel Reflector
3007AC=Antique Copper with Antique Copper Reflector
3007TBZ=Tuscan Bronze with Tuscan Bronze Reflector
OD: 4 1/4" (108mm)



3008

Showerlight - wet location listed**37W 12V MR16**

3008FG=White Polymer with Glass Lens with Frosted Perimeter
OD: 4 1/4" (108mm)



3009

Adjustable Gimbal**50W 12V MR16**

3009WHBB=White with Black Baffle
3009WHWB=White with White Baffle
3009BKBB=Black with Black Baffle
3009SNBB=Satin Nickel with Black Baffle
3009ACBB=Antique Copper with Black Baffle
3009TBZBB=Tuscan Bronze with Black Baffle
OD: 4 1/4" (108mm)

Accessories



Lamp
Z28=GU10, 25° 50W 120V lamp

Note: Specifications and Dimensions subject to change without notice.

Visit our web site at www.cooperlighting.com

for air tight construction.