



# TRAC-MASTER®

## Low Voltage SPOTLIGHTS

### T442, T443 and TP443

Use in conjunction with T537 or T538 transformer or other Low Voltage monopoint accessories

Project: \_\_\_\_\_

Fixture Type: \_\_\_\_\_

Location: \_\_\_\_\_

Contact/Phone: \_\_\_\_\_

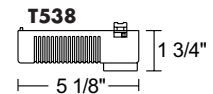
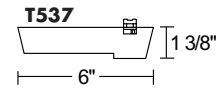
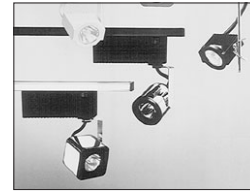
#### PRODUCT DESCRIPTION

Low voltage fixtures offer precise control and energy efficiency for accent lighting and display applications.

**Transformer T537 or T538** 12V solid state electronic transformer with on/off switch or Juno Trac-Master low voltage monopoint • Dimmable, see specification sheets D1.2.1 • Must be ordered separately.

**Aiming** 90° vertical aiming capability and 358° rotation.

**Labels** UL listed, CSA certified • Union made, AFL-CIO.

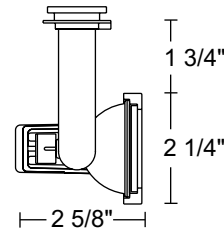


#### Low Voltage MR16

**Construction** Die-cast Aluminum housing with steel yoke.

**Socket** Ceramic bi-pin.

Catalog Number	Description	Finish	Lamp
T443WH	Notch Back	White	20-50W MR16
T443BL	Notch Back	Black	20-50W MR16



#### ACCESSORIES

Cat. No.	Description	Cat. No.	Description	Cat. No.	Description
T551-5	Color Filters	T557	Prismatic Spread Lens	T559	Linear Spread Lens
T5501-18	Dichroic Lenses	T5520	Diffuse Spread Lens	T5521	Uniformity Lens
T5522	UV Filter Lens	T5559BL	Hexcell Louver		

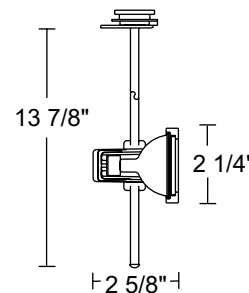
See specification sheet D1.2.2 for details.

#### Low Voltage MR16

**Construction** Die-cast Aluminum housing with steel clip and rod.

**Socket** Ceramic bi-pin.

Catalog Number	Description	Finish	Lamp
TP443WH	Pendant Notch Back	White	20-50W MR16
TP443BL	Pendant Notch Back	Black	20-50W MR16



#### ACCESSORIES

Cat. No.	Description	Cat. No.	Description	Cat. No.	Description
T551-5	Color Filters	T557	Prismatic Spread Lens	T559	Linear Spread Lens
T5501-18	Dichroic Lenses	T5520	Diffuse Spread Lens	T5521	Uniformity Lens
T5522	UV Filter Lens	T5559BL	Hexcell Louver		

See specification sheet D1.2.2 for details.

**TRAC-MASTER®**Low Voltage  
**SPOTLIGHTS****T442, T443 and TP443**

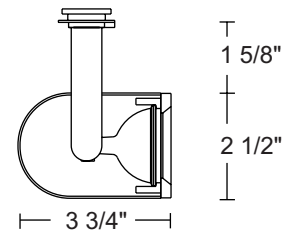
Use in conjunction with T537 or T538 transformer  
or other Low Voltage monopoint accessories

**Low Voltage MR16**

**Construction** Steel housing and yoke, cast bezel.

**Socket** Ceramic bi-pin with integral heat shield.

Catalog Number	Description	Finish	Lamp
T442WH	Round Back Cylinder	White	20-50W MR16
T442BL	Round Back Cylinder	Black	20-50W MR16

**ACCESSORIES**

Cat. No.	Description	Cat. No.	Description	Cat. No.	Description
T551-5	Color Filters	T557	Prismatic Spread Lens	T559	Linear Spread Lens
T558BL	Black Snoot	T5501-18	Dichroic Lenses	T5520	Diffuse Spread Lens
T5521	Uniformity Lens	T5522	UV Filter Lens	T5559BL	Hexcell Louver

See specification sheet D1.2.2 for details.



JUNO LIGHTING GROUP

1300 S. Wolf Road • P.O. Box 5065 • Des Plaines, IL 60017-5065 • Phone (847) 827-9880 • Fax (847) 827-2925  
220 Chrysler Drive • Brampton, Ontario • Canada L6S 6B6 • Phone (905) 792-7335 • Fax (905) 792-0064  
Visit us at [www.junolightinggroup.com](http://www.junolightinggroup.com)

Printed in U.S.A. ©2005 Juno Lighting, Inc.