

**Juno****TRAC-MASTER®**

Avant Garde

**CAST 16®****T350 and T447**

Project: \_\_\_\_\_

Fixture Type: \_\_\_\_\_

Location: \_\_\_\_\_

Contact/Phone: \_\_\_\_\_

**PRODUCT DESCRIPTION**

The Cast 16 Series has a distinctive rectangular or cube design with subtle, rounded corners and integral miniature black baffles. These trac lights produce a controlled optical beam that is ideal for pin spotting and other display lighting applications.

**Lamp** 20-75W MR16 lamps.

**Socket** Ceramic bi-pin with integral heat shield.

**Construction** Cast aluminum housing.

**Adapter** Copper alloy contacts provide precise spring action - no arcing and will not take a set • True, positive electrical ground • On/off switch included • Patented embossed polarity arrows on bottom of adapter • Spring-loaded positive latch with embossed polarity arrows secures trac light to trac • "Pull-up" contact to up position for two-circuit application.

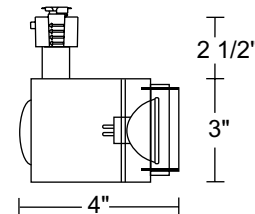
**Labels** UL listed, CSA certified • Union made, AFL-CIO.

**Low Voltage MR16**

**Transformer** 12V Integral magnetic.

**Aiming** 90° vertical aiming capability and 321° rotation.

Catalog Number	Style	Finish	Baffle	Lamp
<b>T350WH</b>	Cast Rectangle	White	Black	20-75W MR16
<b>T350BL</b>	Cast Rectangle	Black	Black	20-75W MR16

**ACCESSORIES**

Cat. No.	Description	Cat. No.	Description	Cat. No.	Description
<b>T551-5</b>	Color Filters	<b>T557</b>	Prismatic Spread Lens	<b>T559</b>	Linear Spread Lens
<b>T5501-18</b>	Dichroic Lenses	<b>T5520</b>	Diffuse Spread Lens	<b>T5521</b>	Uniformity Lens
<b>T5522</b>	UV Filter Lens	<b>T5559BL</b>	Hexcell Louver		

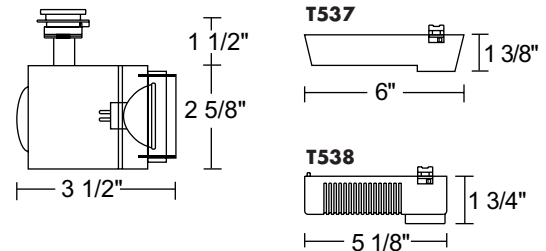
See specification sheet D1.2.2 for details.

**Low Voltage MR16**

**Transformer** **T537** or **T538** Power Pack, 12V solid state electronic transformer with on/off switch • Must be ordered separately.

**Aiming** 90° vertical aiming capability and 306° rotation.

Catalog Number	Style	Finish	Baffle	Lamp
<b>T447WH</b>	Cast Cube	White	Black	20-75W MR16
<b>T447BL</b>	Cast Cube	Black	Black	20-75W MR16

**ACCESSORIES**

Cat. No.	Description	Cat. No.	Description	Cat. No.	Description
<b>T551-5</b>	Color Filters	<b>T557</b>	Prismatic Spread Lens	<b>T559</b>	Linear Spread Lens
<b>T5501-18</b>	Dichroic Lenses	<b>T5520</b>	Diffuse Spread Lens	<b>T5521</b>	Uniformity Lens
<b>T5522</b>	UV Filter Lens	<b>T5559BL</b>	Hexcell Louver		

See specification sheet D1.2.2 for details.

THIS SIDE INTENTIONALLY LEFT BLANK



1300 S. Wolf Road • P.O. Box 5065 • Des Plaines, IL 60017-5065 • Phone (847) 827-9880 • Fax (847) 827-2925  
220 Chrysler Drive • Brampton, Ontario • Canada L6S 6B6 • Phone (905) 792-7335 • Fax (905) 792-0064  
Visit us at [www.junolightinggroup.com](http://www.junolightinggroup.com)

Printed in U.S.A. ©2005 Juno Lighting, Inc.