

## 10 YEAR MANUFACTURER'S

### LIMITED WARRANTY

All parts of this Kingston Brass faucet are warranted to the original retail purchaser to be free from defects in material and workmanship for a period of Ten(10) years from the date of purchase as shown on the purchaser's receipt.

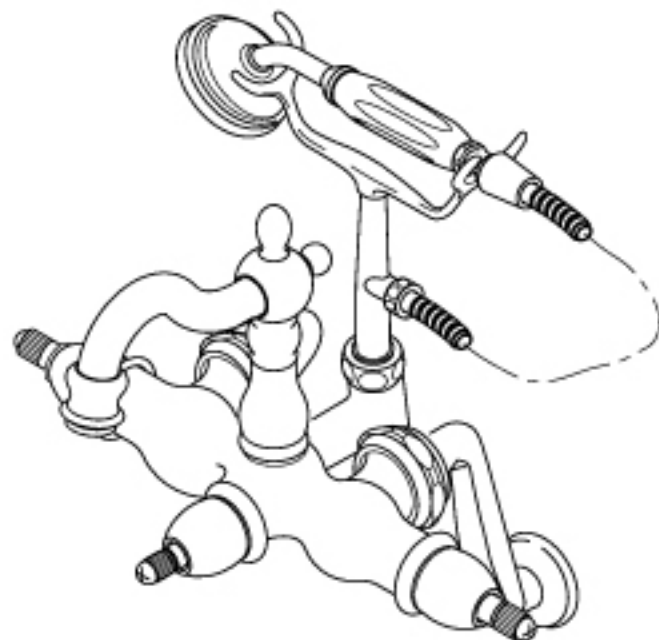
This warranty is limited to defective parts only, labor charges and/or damage resulting from improper installation, repair or replacements, as well as incidental and consequential damages connected therewith are excluded.

Any damage to this faucet as a result of misuse, abuse, neglect, accident, or improper installation or any use not consistent with the instructions furnished by us, will void this warranty.

Replacement parts can be obtained from your local dealer. Freight cost is not covered by Manufacture.

### CAUTION!!!

1. Water lines must be completely flushed before use, to avoid debris & clogs in your water system leading to mal-function and reduction of water flow.
2. Warranty to be void if water lines are not flushed before use of new faucet.
3. Use of abrasives of any strength may damage the finish of your faucet and void this warranty.



Installation instructions apply to:

Model No.	Finish
CC1302T1*	Chrome
CC1301 T2*	Polished Brass
CC1301 T5*	Oil Rubbed Bronze
CC1301 T8*	Satin Nickel



AL - American Lever



PL - Porcelain Lever

CODE APPROVAL: LA#M-000018

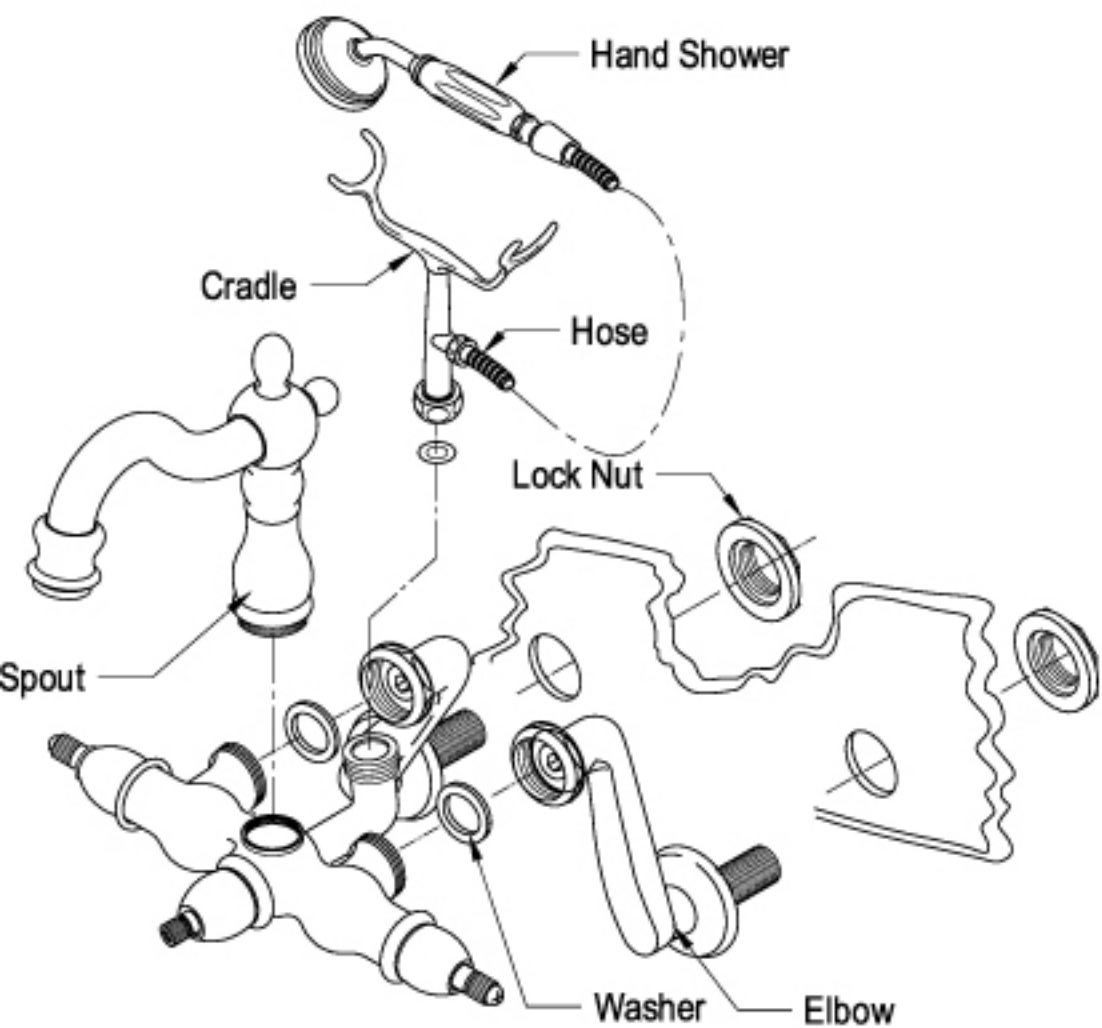
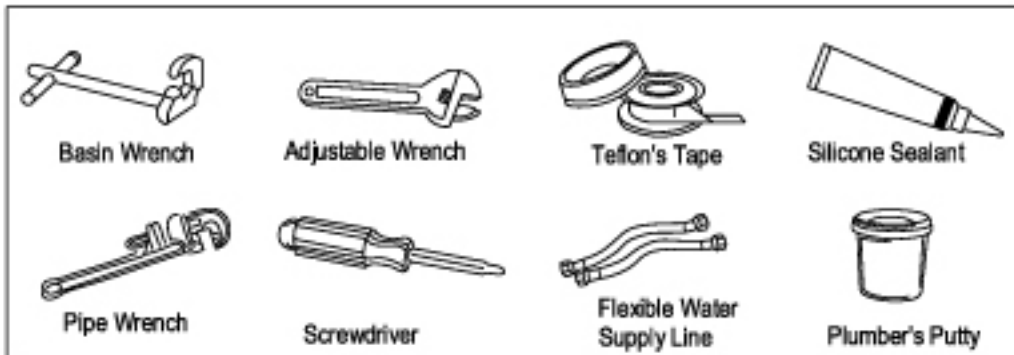
www.kingstonbrass.com

TOLL-FREE CUSTOMER SERVICE: 877-2-KBRASS

TECHNICAL SUPPORT E-mail: service@kingstonbrass.com

6240 Prescott Court, Chino, CA91710

**INSTALLATION INSTRUCTIONS**  
**For Use KB's Heritage Spout Leg Tub Filler With Hand Shower**



- NOTE:**
1. USE TEFLON TAPE ON ALL THREADED CONNECTIONS
  2. FLUSH LINE BEFORE FAUCET INSTALLATION TO REMOVE DEBRIS IN LINES.
  3. NO PLUMBER'S PUTTY ON ANY FINISH TO CORRODE FINISH OF FAUCET SURFACE.



**ASSEMBLY INSTRUCTIONS FOR HANDLES**

- Lever Handles :**
1. Be sure the broaches screws are tightened before installing the lever handles.
  2. Put the lever handles on the broaches and Tighten using the alien wrench provided.