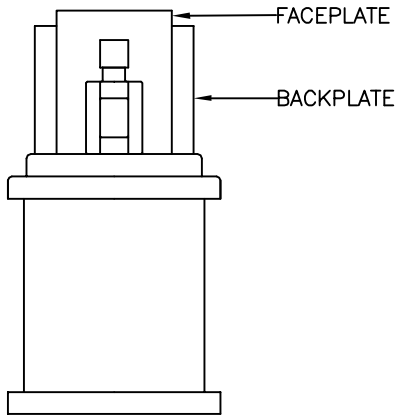
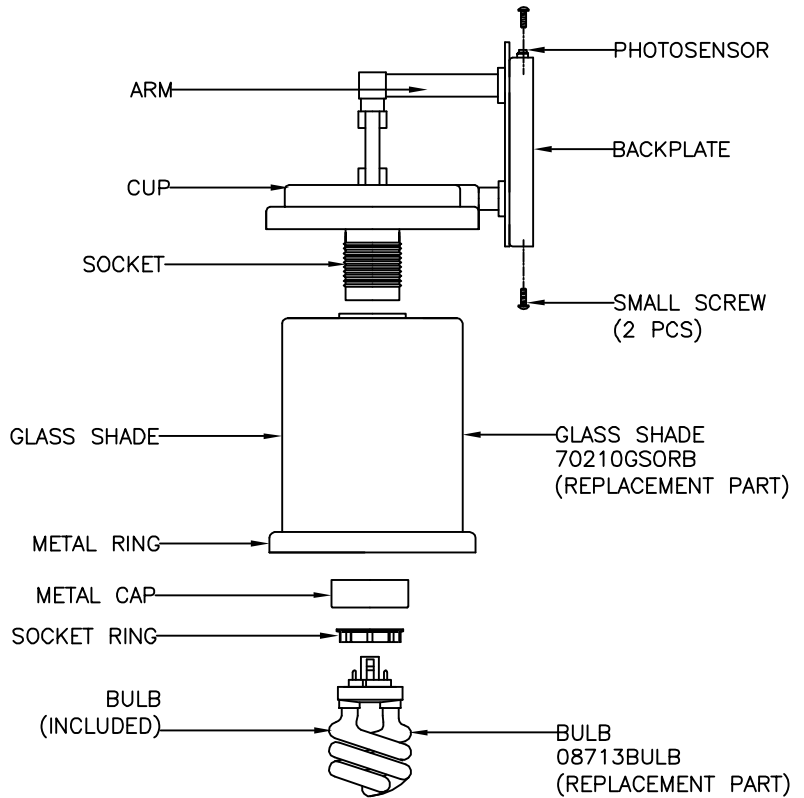


AVAILABLE PARTS ARE:  
70210GSORB (GLASS SHADE)  
08713BULB (BULB)



**FRONT VIEW**



**SIDE VIEW**

**PRODUCT SPECIFICATIONS**

**OVERALL ASSEMBLED DIMENSIONS**

HEIGHT: 29 CM (11-7/16"), WIDTH: 15.3 CM (6"), EXTENSION: 19.2 CM (7-9/16").

- 1 LIGHT:** UL LISTED. 13 WATT, GU24 PLASTIC SOCKET. 13 WATT G24Q-1 BULB INCLUDED. PHOTOSENSOR IINCLUDED.
- FACEPLATE:** PAINTED ALUMINUM, 14.7 CM (5-3/4") LENGTH x 8.3 CM (3-1/4") WIDTH x 0.3 CM (1/8") THICK.
- BACKPLATE:** PAINTED ALUMINUM, 13.6 CM (5-3/8") LENGTH x 11.4 CM (4-1/2") WIDTH. x 2.5 CM (1") HEIGHT.
- CUP:** PAINTED ALUMINUM, 15.3 CM (6") SQ. x 3.2 CM (1-1/4") HEIGHT. SHAPED AS SHOWN.
- GLASS SHADE:** AMBER MARBLEIZED GLASS SHADE FOR ORB FINISH, WHITE MARBLEIZED GLASS SHADE FOR APW FINISH, 13 CM (5-1/8") SQ. (TOP) x 15.3 CM (6") SQ. (BOTTOM) x 17.2 CM (6-3/4") HEIGHT. A METAL RING STICKED ON GLASS SHADE. SHAPED AS SHOWN.
- SUPPLY WIRE:** UL LISTED. 18 AWG, 105', MUST EXTEND A MINIMUM OF 15.2 (6") PAST CENTER OF BACKPLATE, BLACK/WHITE COLOR. WIRES MUST BE LEAD FREE.
- LABEL:** UL AND CSA OR CUL, MANUFACTURING DATE, MODEL # AND COUNTRY OF ORIGIN LABELS PROVIDED ON BACKPLATE. RELAMPING LABEL FOR 13 WATT MAX. TYPE "G24Q-1" PROVIDED ON SOCKET OR NEAR SOCKET.

**PACKAGING AND SHIPPING:**

- THE ITEM IS DISASSEMBLED FOR SHIPPING AS SHOWN. EACH PART IS SECURED SO THEY CAN NOT MOVE DURING SHIPPING.
- HARDWARE PACK #005 PROVIDED. ENTIRE FIXTURE IS COVERED IN A CLOSED PLASTIC BAG WITH A SMALL BAG OF SILICA INSIDE.
- THE CARTON IS MADE OF DOUBLE WALL, CORRUGATED CARDBOARD "A MA A". BROWN IN COLOR. THE INNER PACKING IS DIE-CUT CARDBOARD OR STYROFOAM TO PROTECT AND SECURE THE LAMP AND MUST PASS THE SPECIFIED DROP TEST REQUIREMENTS.
- EACH CARTON SHALL BE PRINTED WITH A LINE DRAWING AND THE KENROY HOME NAME AND LOGO, ENERGY STAR LOGO, MODEL NUMBER, SKU NUMBER AND FINISH, EACH CARTON SHALL BE PROVIDED A UPC LABEL. THE UPC BAR CODE AS FOLLOWS: ORB=053392069605.

**OTHER DETAILS:**

- ENTIRE BACKPLATE ASSEMBLY MUST SIT FLUSH AGAINST WALL SURFACE.
- ALL VISIBLE METAL PARTS MUST MATCH FIXTURE FINISH UNLESS OTHERWISE SPECIFIED.
- MODEL 70210ORB INSTRUCTIONS ARE TO BE PRINTED CLEARLY ON QUALITY PAPER AND PACKED WITH EACH FIXTURE.
- ALL BAGS MUST BE LABELED WITH OFFICIAL "THIS BAG IS NOT A TOY" STATEMENT.
- THE ITEM MUST BE UL APPROVED FOR WET LOCATION.
- ASSEMBLY TIME: 5 MINUTES.
- DIMS OF BOX: 44 CM (17-5/16") LENGTH x 26 CM (10-1/4") WIDTH x 23 CM (9-1/16") HEIGHT.
- NET WEIGHT: 4.4 LBS. GROSS WEIGHT: 5.7 LBS.
- THE UL NUMBER IS E159469.

<b>KENROY HOME</b> 11660 CENTRAL PARKWAY JACKSONVILLE, FL. 32224 PHONE: 904-642-4340 FAX: 904-642-4150	THIS DOCUMENT AND THE INFORMATION THAT IT DISCLOSES IS THE EXCLUSIVE PROPERTY OF HUNTER LIGHTING GROUP. ANY REPRODUCTION OR USE OF THIS DRAWING IN PART OR IN WHOLE, WITHOUT THE EXPRESS CONSENT OF THE PROPRIETOR IS PROHIBITED. © 2006 HUNTER LIGHTING GROUP.			REVISION DATE: 11/21/07 add sensor	MODEL #: <b>70210</b>
	DATE: 5/25/2007	SCALE: NONE	DRAWN BY: JAMES	REVISION DATE: 5/15/08 add parts NO.	FINISH: <b>ORB</b>
REFERENCE: PLATEAU 1LT. SMALL WALL LANTERN	APPROVAL:			PAGE: 1 OF: 1	