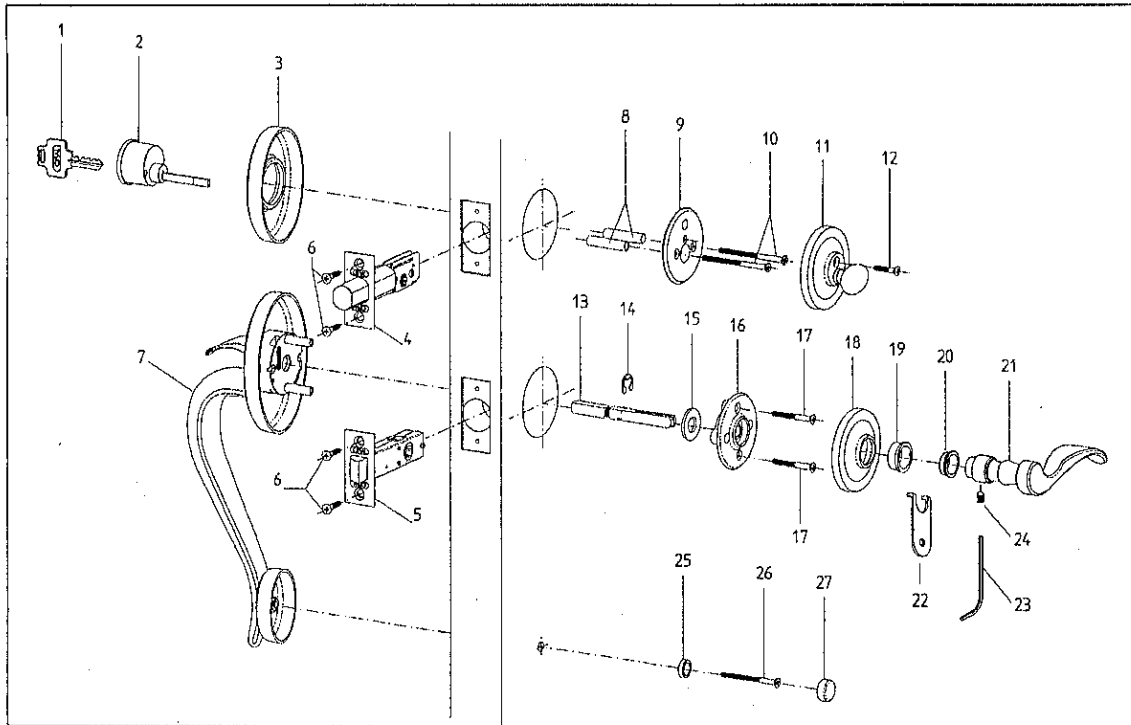




SINGLE CYLINDER ENTRANCE SET

Installation Instructions



Parts Enclosed:

- | | | |
|---|---|-------------------------------------|
| 1. (2) Key | 10. (2) 10-32 x 2 1/4" Flat Head Screws | 19. (1) Trim Nut |
| 2. (1) Single Cylinder | 11. (1) Inside Turn piece Trim Assembly | 20. (1) Trim Nut Bushing |
| 3. (1) Outside Cylinder Collar | 12. (1) 8-32 x 3/4" Oval Head Screw | 21. (1) Lever / Knob |
| 4. (1) Deadbolt | 13. (1) Entrance Spindle | 22. (1) Trim Nut Key |
| 5. (1) Latch | 14. (1) Spindle C-clip | 23. (1) Allen Wrench |
| 6. (4) N. 8 x 3/4" Flat Head Combination Screws | 15. (4) Space Washers (2x1/8"; 2x1/16") | 24. (1) Set Screw |
| 7. (1) Outside Grip Handle Assembly | 16. (1) Entrance Mounting bracket | 25. (1) Screw Cap Washer |
| 8. (2) Aligning tubes | 17. (2) 8-32 1 1/2" Flat Head Screw | 26. (1) 8-32 2" 7/8 Flat Head Screw |
| 9. (1) Deadbolt Mounting Bracket | 18. (1) Rosette | 27. (1) Screw Cap |

A. Prepare door as per enclosed marking template. Mark and drill hole (5/16") for appropriate entrance set design.

B. Bore 2 1/8" (54mm) holes from both sides of door face and 1" diameter hole into the door edge.

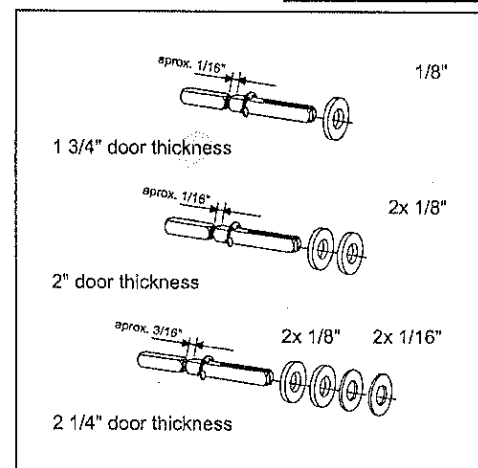
C. Insert deadbolt [4] and latch [5] and face plate assembly in holes and draw line around them. Remove them and chisel out scribed area to a depth of 1/8" (3mm) or until face is flush with door edge. Insert deadbolt [4] and latch [5] and respective face plates. Fasten with screws [6].

D. Insert spindle [13] with V-groove down.

E. Slip space washers [15] onto spindle [13] as illustrated in **Fig. 1** and according to door thickness. To accommodate door thickness variances use thinner washer (1/16").

F. Tighten entrance mounting bracket [16] with 8-32 1 1/2" flat head screws [17].

Fig. 1



- G. Place rosette [18] over mounting bracket and align boss into mounting bracket hole. Place trim nut [19] through rosette and screw into mounting bracket. Secure with trim nut key [22].
- H. Snap nylon trim nut bushing [20] into trim nut [19].
- I. Place lever or knob [21] over spindle [13] and secure with set screw [24] using provided allen wrench [23].
- J. Carefully break off cylinder tail piece (using 2 sets of pliers) at required mark for 1 3/4" door thickness as illustrated in Fig. 2. For 2" and 2 1/4" door thickness - leave as is.
- K. Extend bolt [4]. Push single cylinder [2] through collar [3] without key [1] flush against door, keeping cylinder tail piece vertical and properly positioned in the bolt crank.
- L. Insert aligning tubes [8] into bolt [4] holes and tighten mounting plate [9] with two 10-32 flat head machine screws [9].
- M. Place turnpiece trim assembly [11] over mounting bracket [9] inserting positioning post into mounting bracket hole. Insert and tighten 8-32 oval head machine finished screw [12].
- N. Tighten grip handle [7] with 8-32 1 7/8" flat head machine screw [26] using screw cap washer [25]. Thread on screw cap [27]

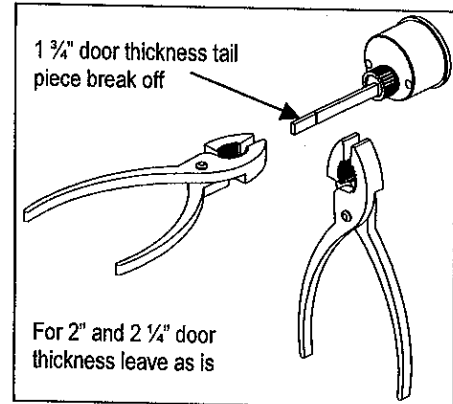
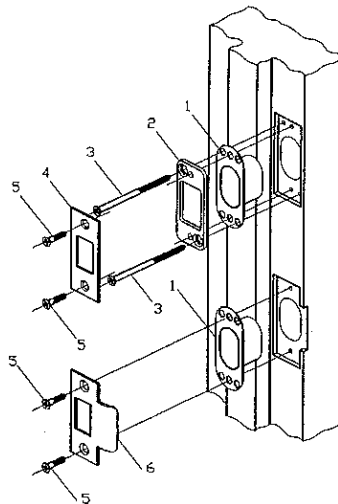


Fig. 2

Security Strike Installation

- 1- (1) Dust Box
 2- (1) Reinforcing Strike
 3- (2) 3" Reinforcing Screws
 4- (1) Strike Plate
 5- (2) N. 8 x 3/4" Flat Head Combination Screws
 6- (1) T Strike Plate



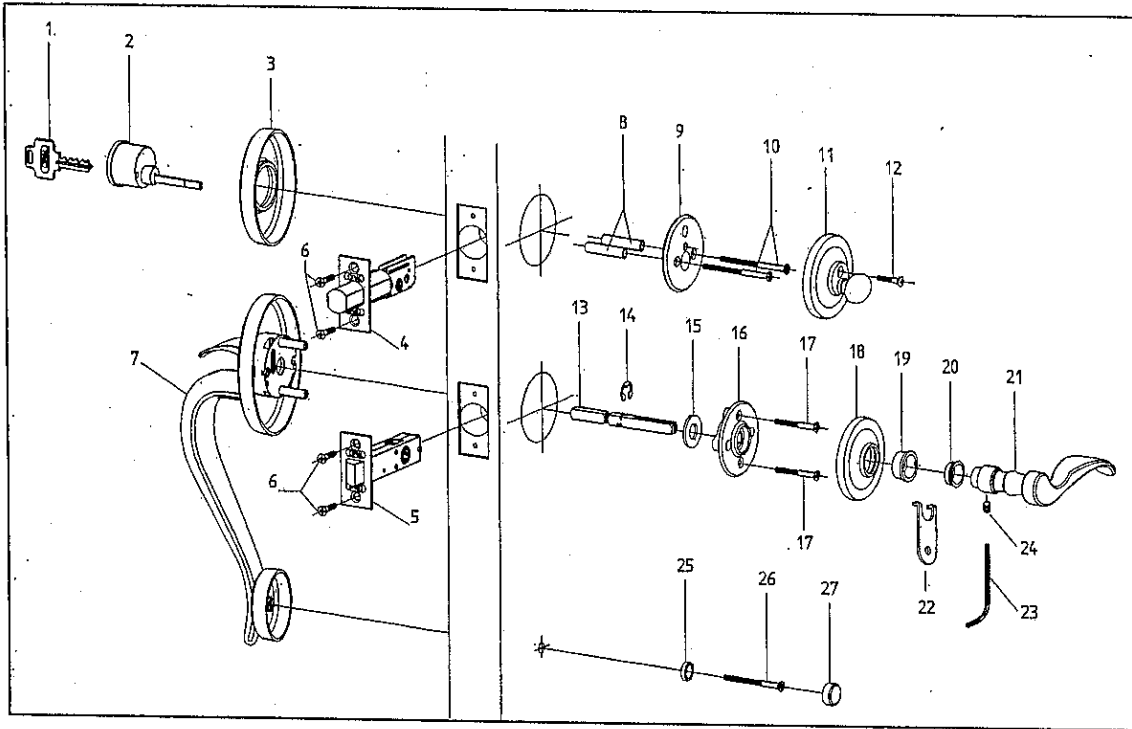
Deadbolt Strike:

- A. Locate center point of bolt and mark vertical line on door jamb
- B. Align and trace around strike plate [4] on jamb
- C. Using reinforcing strike [2] as a template, mark locations for reinforcing screws [3]. Drill two 5/32" diameter pilot holes for the 3" long screws and two 1/8" diameter pilot holes for the N.8x 3/4" flat head screws [5].
- D. Mark drill points 5/16" above and below centering point and bore two 1" diameter holes 1 1/4" deep. Chisel out holes for dust box [1].
- E. Mortise 7/32" deep or until the dust box [1], reinforcing strike [2] and strike plate [4] are flush to door jamb.
- F. Install strike plate [4] as illustrated.

Latch Strike

- G. Locate center point of latch and mark vertical line on door jamb
- H. Locate and mark strike mounting screws
- I. Align and trace around T strike plate [6] on jamb
- J. At previously marked locations, drill two 1/8" diameter pilot holes for N.8 x 3/4" screws [5]
- K. Mark drill points 5/16" above and below centering point and bore two 1" diameter holes 1 1/4" deep. Chisel out holes for dust box [1]
- L. Mortise 7/32" deep or until the dust box [1] and strike plate are flush to door jamb.
- M. Install T strike plate [6] as illustrated

SINGLE CYLINDER ENTRANCE SET *Installation Instructions*



Single Cylinder Entrance Set Part Numbers & Description		
1	Key	
2	530.216.XXX	Single Cylinder
3		Dunwoody Decorative Trim Cylinder Collar / Part Unique to Dunwoody
4	530.238.605	2-3/8" Backset Deadbolt Latch Brass Tongue
4	530.238.626	2-3/8" Backset Deadbolt Latch Br. Chr. Tongue
4	530.234.605	2-3/4" Backset Deadbolt Latch Brass Tongue
4	530.234.626	2-3/4" Backset Deadbolt Latch Br. Chr. Tongue
5	938.K09.605.PA	2-3/8" Backset Knob Passage Latch Brass Tongue
5	938.K09.450.PA	2-3/8" Backset Knob Passage Latch Nickel Tongue
5	934.K09.605.PA	2-3/4" Backset Knob Passage Latch Brass Tongue
5	934.K09.450.PA	2-3/4" Backset Knob Passage Latch Nickel Tongue
6	530.209.XXX	8 x 3/4" Flat Head Combination Screws
7	551.EXT.XXX	Asbury Outside Grip Handle Assembly
7	552.EXT.XXX	Classe Outside Grip Handle Assembly
7	553.EXT.XXX	Dunwoody Outside Grip Handle Assembly
8	530.TUBE	Deadbolt Aligning Tubes
9	530.234.000	Single Cylinder Deadbolt Mounting Bracket
10	530.201.000	10-32 x 2-1/4" Fl. HD Single Cylinder Mounting Bracket Thru-Bolts
11	530.510.XXX	Asbury Deadbolt Rosette & Turn Piece Assembly
11	530.511.XXX	Classe Deadbolt Rosette & Turn Piece Assembly
11	530.512.XXX	Dunwoody Deadbolt Rosette & Turn Piece Assembly
12	530.206.XXX	8-32 x 3/4" Oval Head Rosette & Turn Piece Assembly Mounting Screw
13	530.603.000	Entrance Set Spindle
14		Spindle C-Clip
15	530.012.000	1/8" Spindle Washer / Spacer
	530.015.000	1/16" Spindle Washer / Spacer
16	530.013.000	Entrance Set Lever Mounting Bracket w/ Spring
	530.014.000	Entrance Set Knob Mounting Bracket wo/ Spring
17	530.002.000	8-32 x 1-1/2" Flat Head Mounting Bracket Thru-Bolt
18	850.310.XXX	Simply Brass Passage Rosette
19	930.955.XXX	Rosette Trim Nut
20	930.967.000	Rosette Trim Nut Nylon Bushing
21		Lever or Knob
22	930.956.000	Trim Nut Key
23	930.002.000	Allen Wrench
24	930.100.000	Set Screw
25 &	530.058.XXX	5/8" Dia. Tradition Screw Cap Cover Assembly / Used with Asbury Ent.
27	531.058.XXX	5/8" Dia. Contemporary Screw Cap Cover Assembly / Used with Classe & Dunwoody Ent.
26	530.003.000	8/32 x 2-7/8" Bottom Screw for Grip Handle