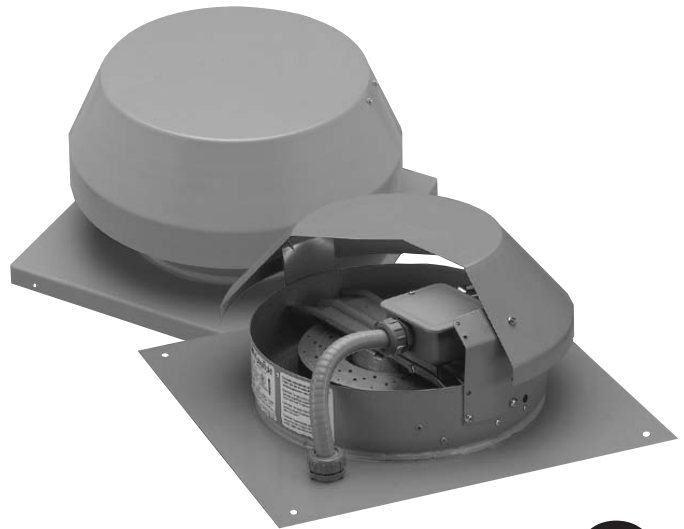




Fantech

Your Ventilation Solutions Company



Installation Instructions for Model RE(C)

READ & SAVE THESE INSTRUCTIONS!

Installation

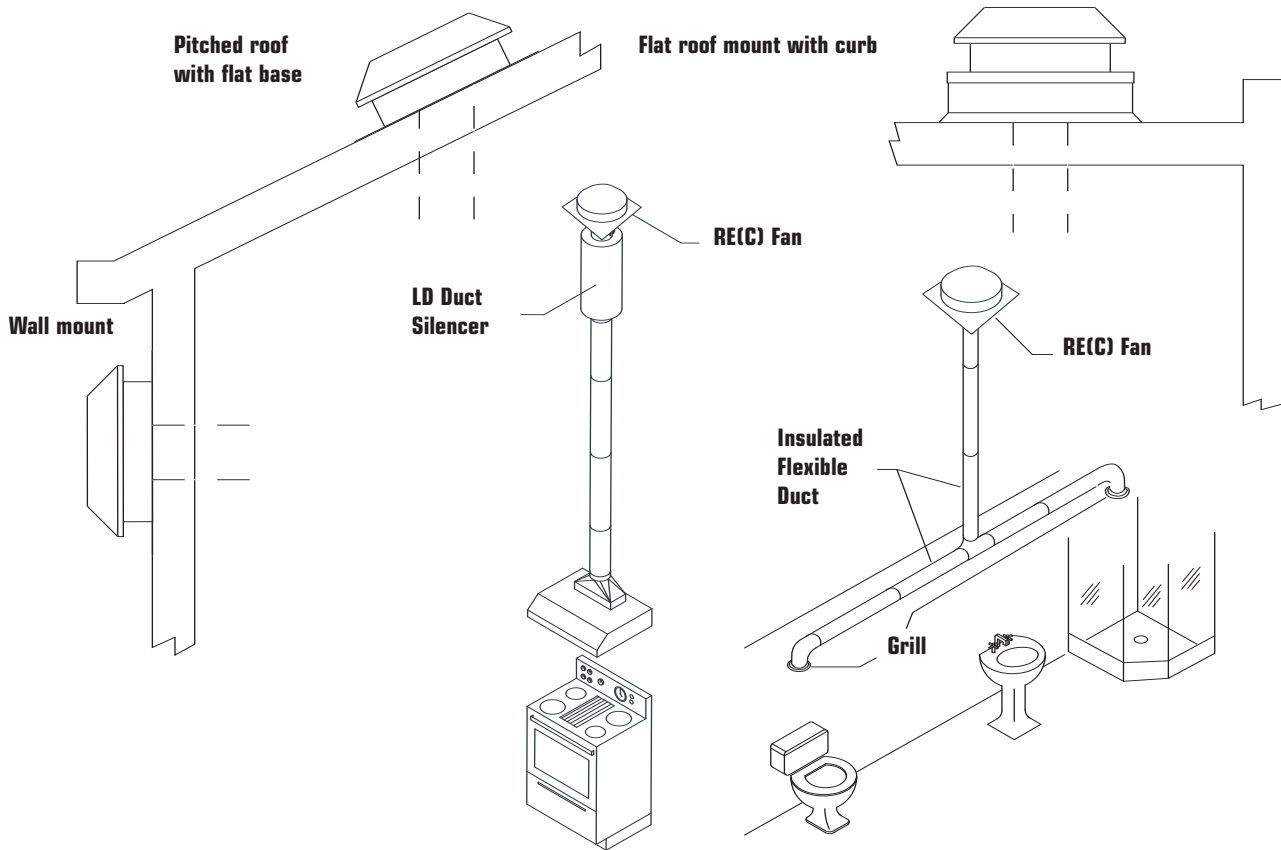
1. The compactness and adaptability of Models RE(C) fans permit easy installation. The straight-thru air flow fans are shipped fully assembled and can be mounted at any angle. For various mounting and ducting options. (see **Typical Installations**)
2. Because this unit has rotating parts, safety precautions should be exercised during phase of installation, operation and maintenance.
3. CAUTION: "For General Ventilation Use Only. Do Not Use To Exhaust Hazardous Or Explosive Material and Vapors."
4. Remove unit from package and inspect within 15 days after receipt. If damaged, report damage to carrier. Do Not operate this unit with visible damage to the blower or impeller assembly.
5. Ensure centrifugal impeller has free rotation. If impeller hits orifice, check screws holding motor bracket. Adjustment can be made by loosening motor bracket screws, then pull up on motor bracket while tightening screws. Tighten all screws before operating unit. **WEAR HAND PROTECTION AND STAY CLEAR OF SHARP EDGES.**
6. Screen guards must be installed when fan will be within reach of personnel, within (7) feet of the working area, or when advisable for safety.

Warnings

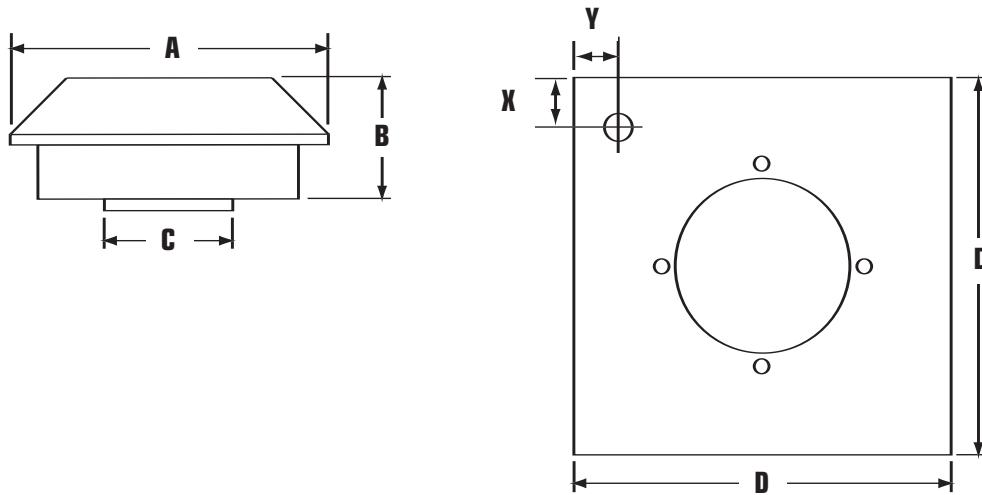
DO NOT CONNECT POWER SUPPLY until fan is completely installed. Make sure electrical service to the fan is locked in "OFF" position.

1. All units are suitable for use with solid-state speed control.
2. WARNING! TO REDUCE THE RISK OF FIRE, ELECTRIC SHOCK, OR INJURY TO PERSONS – OBSERVE THE FOLLOWING:
 - a. Use this unit only in the manner intended by the manufacturer. If you have any questions, contact your manufacturer's representative.
 - b. CAUTION: Before installation, servicing or cleaning unit, switch power off at service panel and lock the service disconnecting means to prevent power from being switched on accidentally. When the service disconnecting means cannot be locked, securely fasten a prominent warning device, such as tag, to the service panel.
 - c. Installation work and electrical wiring must be done by qualified person(s) in accordance with all applicable codes and standards, including fire-rated construction.
 - d. Sufficient air is needed for proper combustion and exhausting of gases through the flue (chimney) of fuel burning equipment to prevent back drafting. Follow the heating equipment manufacturer's guideline and safety standards such as those published by the National Fire Association (NFPA), and the American Society of Heating Refrigeration and Air Conditioning Engineers (ASHRAE), and the local code authorities.
 - e. When cutting or drilling into wall and ceiling, do not damage electrical wiring and other hidden utilities.
 - f. Ducted fans must always be vented to the outdoors.
 - g. If this unit is to be installed over a tub or shower, it must be marked as appropriate for the application and be connected to a GFCI (Ground Fault Circuit Interrupter) - protected branch circuit.
 - h. NEVER place a switch where it can be reached from a tub or shower.
3. WARNING! Check voltage at the fan to see if it corresponds to the motor name plate.

Typical Installations



Dimensions



Dimensional Data

Model	A	B	C	D	X	Y	MAX RPM	MAX WATTS	MAX AMPS
RE(C)54 *	9 ³ / ₄	5 ³ / ₄	5	15 ¹ / ₂	4 ³ / ₁₆	4 ³ / ₁₆	2950	19	0.17
RE(C)6	13 ³ / ₁₆	6 ¹ / ₂	6	15 ¹ / ₂	2 ¹⁵ / ₁₆	2 ¹⁵ / ₁₆	2695	87	0.76
RE(C)8XL	15 ³ / ₄	6	8	19	4 ³ / ₈	4 ³ / ₈	2830	148	1.29
RE(C)10XL	19 ³ / ₄	11 ³ / ₄	10	20	3	3	3250	394	3.43
RE(C)10XLT	19 ³ / ₄	12 ¹¹ / ₁₆	10	20	3	3	2900	525	4.81

All dimensions in inches. * Optional 4" reducer for dimension C

Installation Instructions

Suitable sealing such as tar or similar material (not included) should be used to prevent leakage. To prepare for installation, determine the size and type of ducting, if any, to be used. Make an opening in the roof just large enough to accommodate ducting and electrical supply.

Flat Base Mounting

1. Base may be mounted directly on deck beneath roof shingles or upper edge of base plate may be slid underneath shingles.
2. Securely screw or bolt base plate to roof through the four corner mounting points.
3. Through the opening, attach ductwork to fan inlet orifice by using Fantech FC clamps or duct tape.
4. Refer to wiring diagram in this guide to complete electrical connections.
5. Once secured and wired, generously apply tar or other sealant around edges of base to prevent leakage. Be sure to replace any lifted shingles.

Curb Mounting

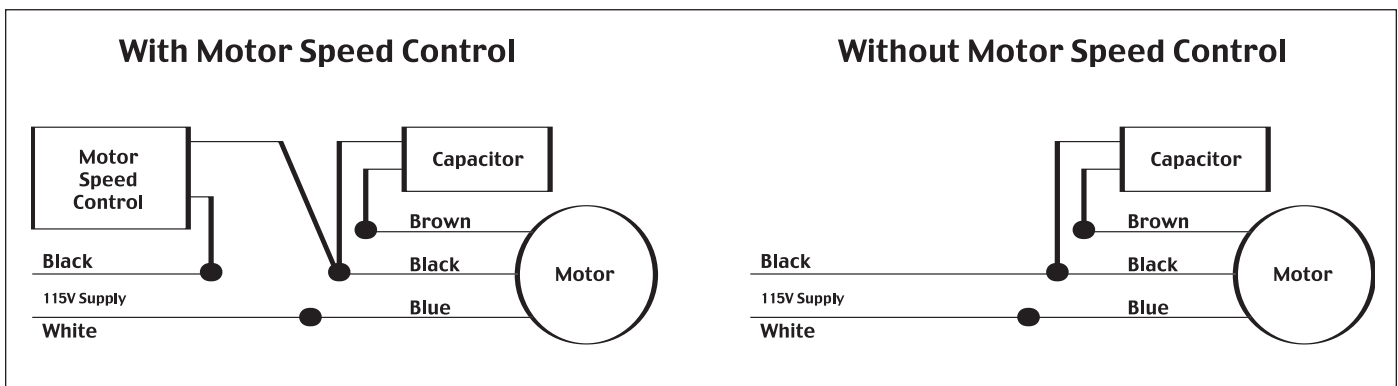
1. Outside dimensions of flanged curb should be approximately 3/8" smaller than the outside dimensions of base. Flanged curbs are available from Fantech.
2. Center curb around roof opening and securely attach to roof. It is advisable to put a bead of sealant around the inside edge of curb.
3. Before mounting base on curb, place a layer of sealant along the top edge of the curb.
4. Place unit on curb and securely attach with bolts or screws.
5. Through the opening, attach ductwork to fan inlet orifice by using Fantech FC clamps or duct tape.
6. Refer to wiring diagram in this guide to complete electrical connections.
7. Once secured and wired, generously apply tar or other sealant around edges of base to prevent leakage. Be sure to replace any lifted shingles.

Wiring

SPECIAL WIRING PRECAUTIONS:

All installation should be wired according to the following diagrams. Failure to comply will cause the motor to "hum" or not work. All units are pre-wired, just bring incoming supply into marked ports on terminal strip.

1. Turn off power at service entrance before wiring this fan.
2. Read the fan data plate to determine the current draw. Check that available supply is suitable.
3. Remove top enclosure of fan and the wiring box lid. A 7/8" hole is provided for electrical service entry. Be certain to use proper connector type for securing conduit or cable.
4. Connect electrical supply inside wiring terminal per diagram below.
5. Replace wiring box lid and top enclosure.



Five (5) Year Warranty

This warranty supersedes all prior warranties

For factory return you must:

- 1) Have a return materials authorization (RMA) number. This number may be obtained by calling FANTECH, INC. At 1-800-747-1762. Please have bill of sale available.
- 2) The RMA number must be clearly displayed on the outside of the carton, or delivery will be refused.
- 3) All product being returned must be shipped prepaid and be accompanied with a copy of the bill of sale.
- 4) Product will be replaced/repared and shipped back to buyer. No credits will be issued.

During the First Thirty (30) Days:

FANTECH, INC will repair or replace any part which has a factory defect in workmanship or material. Product may need to be returned to the FANTECH factory, together with a copy of the bill of sale and identified with RMA number.

During The First Three (3) Years

FANTECH, INC. will replace any product which has a factory defect in workmanship or material. Product must be returned to the FANTECH factory, together with bill of sale, and identified with an RMA number.

During Years Four (4) And Five (5):

FANTECH, INC. will repair or replace any product which has a factory defect in workmanship or material. Product must be returned to the FANTECH factory, together with a bill of sale, and identified with an RMA number.

The following warranties do not apply:

Damages from shipping, either concealed or visible. Claim must be filed with the carrier.

Damages resulting from improper wiring or installation.

Damages caused by acts of nature, or resulting from improper consumer procedures such as: Improper maintenance, misuse, abuse, abnormal use, or accident, or incorrect electrical voltage or current.

Removal or alteration made on the FANTECH label control number or date of manufacture.

Any other warranty, expressed, written or implied, and to any consequential or incidental damages, loss of property, revenues, or profit, or costs of removal, installation or reinstallation, for any breach of warranty.

Warranty validation:

The end user must keep a copy of the bill of sale to verify purchase date.

Limitation of Warranty and Liability

This warranty does not apply to any FANTECH INC. product or part which has failed as a result of faulty installation or abuse, incorrect electrical connections or alterations made by others, or use under abnormal operating conditions or misapplication of the product or parts. We will not approve for payment any repair not made by us or our authorized agent without prior written consent. The foregoing shall constitute our sole and exclusive warranty and our sole exclusive liability, and is in lieu of any other warranties, whether written, oral, implied or statutory. There are no warranties which extend beyond the description on the page hereof. In no event, whether as a result of breach of contract, or warranty or alleged negligence, defect incorrect advice or other causes, shall FANTECH be liable for special or consequential damages, including, but not limited to, loss of profits or revenue, loss of use of equipment or any other associated equipment, cost of capital, cost of substitute equipment, facilities or services, downtime costs, or claims of customers of purchase for such damages. FANTECH neither assumes or authorizes any person to assume for it any other liability in connection with the sale of product(s) or part(s). Some jurisdictions do not allow the exclusion or limitation of incidental or consequential damages so the above limitations and exclusions may not apply to you.

Warning

FANTECH, INC. products are designed and manufactured to provide reliable performance, but they are not guaranteed to be 100% free from defects. Even reliable products will experience occasional failures and this possibility should be recognized by the user. If these products are used in a life support ventilation system where failure could result in loss or injury, the user should provide adequate backup ventilation, supplementary natural ventilation, failure alarm system, or acknowledge willingness to accept the risk of such loss or injury.



United States

1712 Northgate Blvd.,
Sarasota, FL. 34234
Phone: 800.747.1762; 941.309.6000
Fax: 800.487.9915; 941.309.6099
www.fantech.net; info@fantech.net

Canada

50 Kanalfakt Way,
Bouctouche, NB E4S 3M5
Phone: 800.565.3548; 506.743.9500
Fax: 877.747.8116; 506.743.9600
www.fantech.ca; info@fantech.ca

Fantech, reserves the right to modify, at any time and without notice, any or all of its products' features, designs, components and specifications to maintain their technological leadership position.

Article #: 301099
Item #: 401296
Rev Date: 051807