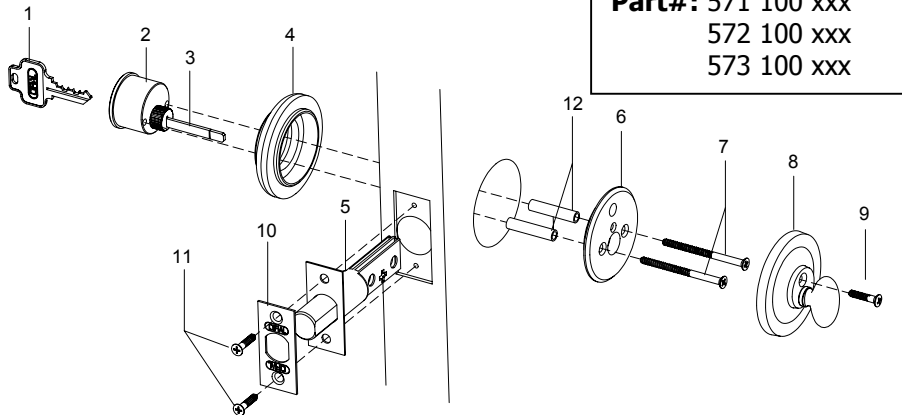


SINGLE CYLINDER DEADBOLT
Installation Instructions

Deadbolt Installation

- 1- (2) Key
- 2- (1) Single Cylinder
- 3- (1) Tail piece
- 4- (1) Outside Cylinder Collar
- 5- (1) Bolt
- 6- (1) Mounting Plate
- 7- (2) 10-32 x 2 1/4" Flat Head Machine Screws
- 8- (1) Inside Turn piece Trim Assembly
- 9- (1) 8-32 x 3/4" Oval Head Machine Screws
- 10- (1) Face plate
- 11- (2) N. 8 x 3/4" Flat Head Combination Screws
- 12- (2) Aligning tubes



Part#: 571 100 xxx
572 100 xxx
573 100 xxx

- A. Prepare door as per template
- B. Bore 2 1/8" (54mm) hole from both sides of door face and 1" diameter hole into the door edge.
- C. Insert bolt (5) and face plate (10) assembly in hole and draw line around face plate. Remove them and chisel out scribed area to a depth of 1/8" (3mm) or until face is flush with door edge. Insert deadbolt (5) and face plate (10) and fasten with two screws (11)
- D. Carefully break off cylinder tail piece (as illustrated on **Fig. 1**) at required mark for 1 3/4" door thickness. For 2" and 2 1/4" door thickness - leave as is.
- E. Extend bolt (5). Push single cylinder (2) through collar (4) without key (1) flush against door, keeping cylinder tail piece vertical and properly positioned in the bolt crank.
- F. Insert aligning tubes (12) into bolt holes and tighten mounting plate (6) with two 10-32 flat head machine screws (7).
- G. Place turn piece trim assembly (8) over mounting plate (6) inserting positioning post into mounting plate hole. Insert and tighten 8-32 oval head machine screw (9).

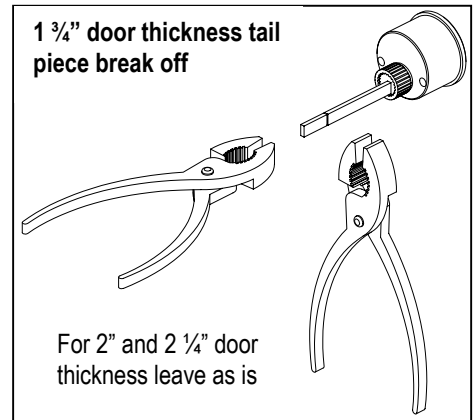
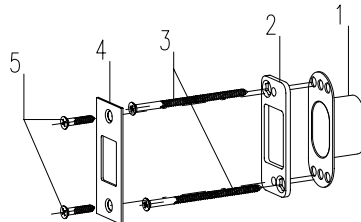


Fig. 1

Security Strike Installation

- 1- (1) Dust Box
- 2- (1) Reinforcing Strike
- 3- (2) 3" Reinforcing Screws
- 4- (1) Strike Plate
- 5- (2) N. 8 x 3/4" Flat Head Combination Screws



- H. Locate center point of bolt and mark vertical line on door jamb
- I. Align and trace around strike plate (4) on jamb
- J. Using reinforcing strike (2) as a template, mark locations for reinforcing screws (3). Drill two 5/32" diameter pilot holes for the 3" long screws and two 1/8" diameter pilot holes for the N.8x 3/4" flat head screws (5).
- K. Mark drill points 5/16" above and below centering point and bore two 1" diameter holes 1 1/4" deep. Chisel out holes for dust box (1).
- L. Mortise 7/32" deep or until the dust box, reinforcing strike and strike plate fit are flush to door jamb.
- M. Install strike as illustrated.

- When installing deadbolts on doors of 1 3/8" (35mm) in thickness, a cylinder collar extension is required [# 530.025.xxx].