

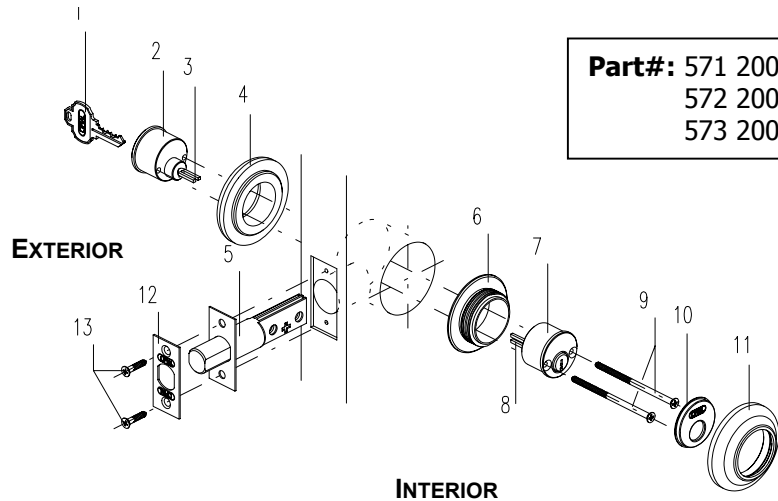


DOUBLE CYLINDER DEADBOLT

Installation Instructions

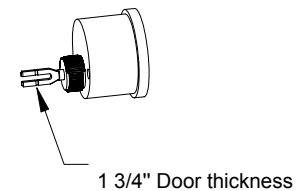
Deadbolt Installation

- 1- (2) Key
- 2- (1) Outside cylinder
- 3- (1) tail piece
- 4- (1) Outside Cylinder Collar
- 5- (1) Deadbolt
- 6- (1) Threaded Collar
- 7- (1) Inside Cylinder
- 8- (1) tail piece
- 9- (2) 10-32 x 2 3/4" Flat Head Machine Screws
- 10- (1) Inside Cylinder Cap
- 11- (1) Inside Cylinder Collar
- 12- (1) Face Plate
- 13- (2) N. 8 x 3/4" Flat Head Combination Screws



- A. Prepare door as per template
- B. Bore 2 1/8" (54mm) hole from both sides of door face and 1" diameter hole into the door edge.
- C. Insert bolt (5) and face plate (12) assembly in hole and draw line around face plate. Remove them and chisel out scribed area to a depth of 1/8" (3mm) or until face is flush with door edge. Insert deadbolt (5) and face plate (12) and fasten with two screws (13).
- D. Carefully break off cylinder tailpiece (**using two pairs of pliers**) at required mark for 1 3/4" door thickness. For 2" and 2 1/4" doors leave as is.
- E. Extend deadbolt (5). Position outside cylinder with finished cap (2) without key (1) and outside non threaded cylinder collar (4) as shown. **Turn tailpiece (3) towards door edge until it stops in a horizontal position.**
- F. Align inside cylinder (7) and threaded collar (6) over inside 2 1/8" diameter hole, keeping tailpiece (8) vertical. Insert and tighten two 10-32 flat head machine screws (9).
- G. Try key (1) in both cylinders to ensure correct operation. Position inside cylinder cap (10) over inside cylinder (7) and thread on the inside decorative cylinder collar (11).

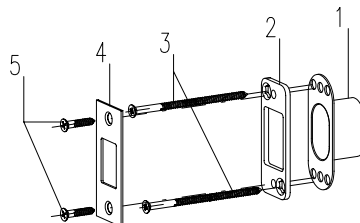
Cylinder Tailpiece Break Off Detail



For 2" and 2 1/4" door thickness leave as is

Security Strike Installation

- 1- (1) Dust Box
- 2- (1) Reinforcing Strike
- 3- (2) 3" Reinforcing Screws
- 4- (1) Strike Plate
- 5- (2) N. 8 x 3/4" Flat Head Combination Screws



- H. Locate center point of bolt and mark vertical line on door jamb
- I. Align and trace around strike plate (4) on jamb
- J. Using reinforcing strike (2) as a template, mark locations for reinforcing screws (3). Drill two 5/32" diameter pilot holes for the 3" long screws and two 1/8" diameter pilot holes for the N.8x 3/4" flat head screws (5).
- K. Mark drill points 5/16" above and below centering point and bore two 1" diameter holes 1 1/4" deep. Chisel out holes for dust box (1).
- L. Mortise 7/32" deep or until the dust box, reinforcing strike and strike plate fit are flush to door jamb.
- M. Install strike as illustrated.