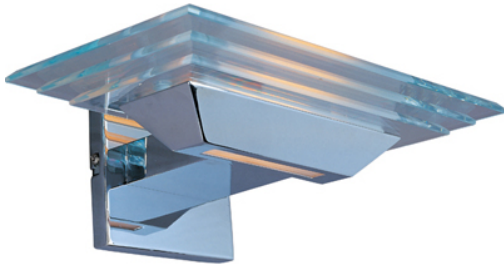




## E20721-18 - Strato 1-Light Wall Mount

"Beam me up Scotty," because this collection looks like it came from a trek to the stars. Stark and dramatic at the same time, this engineering marvel is made up of 3 levels of stacked thick beveled glass completely hung on a chrome housing that contains the Xenon lamps. The perfect application for a modern kitchen or a workstation in the distant future, the impression it gives is out of this world.



Item: E20721-18  
Collection: Strato  
Fixture Type: Wall Sconce  
Finish:  
Glass: Clear Glass

### Fixture Dimensions

Width: 12.00"    Height: 4.50"    Length: n/a  
HCO: 2.40"    Extension: 8.00"    Weight: 6.00lbs  
Back Plate: x  
Chain: n/a    Wire: n/a

### Bulbs

Quantity: 1    Type: J-TYPE    Included: Yes  
Wattage: 100w Max    Color Temperature: n/a

### Certifications/Qualifications

UL: DRY    Energy Star: No

### Other

UPC: 845094012801

Note: n/a

### Shipping Information

Individual	Weight	Length	Width	Height	Case	Weight	Length	Width	Height
Qty: 1	9.90lbs	15.20"	10.00"	6.90"	Qty: 6"	n/a			

ET2 Contemporary Lighting and all products, designs, logos and images © 2009 ET2 Contemporary Lighting.. All Rights Reserved. ET2 Contemporary Lighting reserves the right, at any time, to make changes in the design and/or construction of the product including the discontinuation of product without prior notice. Products are subject to revision in design and/or construction to conform to changes in UL and/or CSA standards, or that which may be required by law or availability of material.

Color may vary from what is pictured above due to limitations inherent to photographic processes.