

SPECIFICATIONS

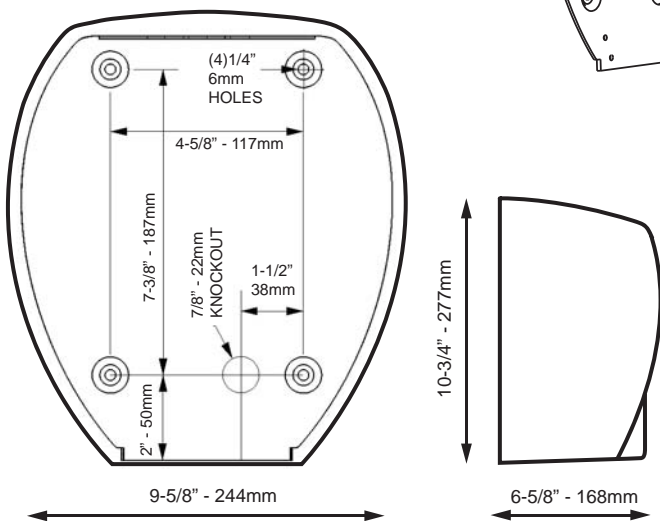
Voltage: Universal - 115/208/230VAC 50/60Hz
Wattage: 1450 watts
Amps: 12.6 @ 115VAC, 6.3A @ 230VAC
Motor: 20,000 RPM high-output universal
Air velocity: 16,000 linear feet per minute
Sensor: Solid state infra-red, environmentally sealed
Circuit breaker: Bi-metallic temp. limiting, auto-resetting
Net Weight: 24 lbs / 11 kg
Dimensions: 10-3/4" H X 9-5/8" W X 6-5/8" D /
 277mm H X 244mm W X 168mm D
Warranty: 10 years entire dryer - See website for details
Cover material: Cast iron, 1/4-inch (6mm) thick with
 porcelain enamel finish
Available colours: White, black, grey
Mode of locking cover: Tamper-proof screws

FEATURES

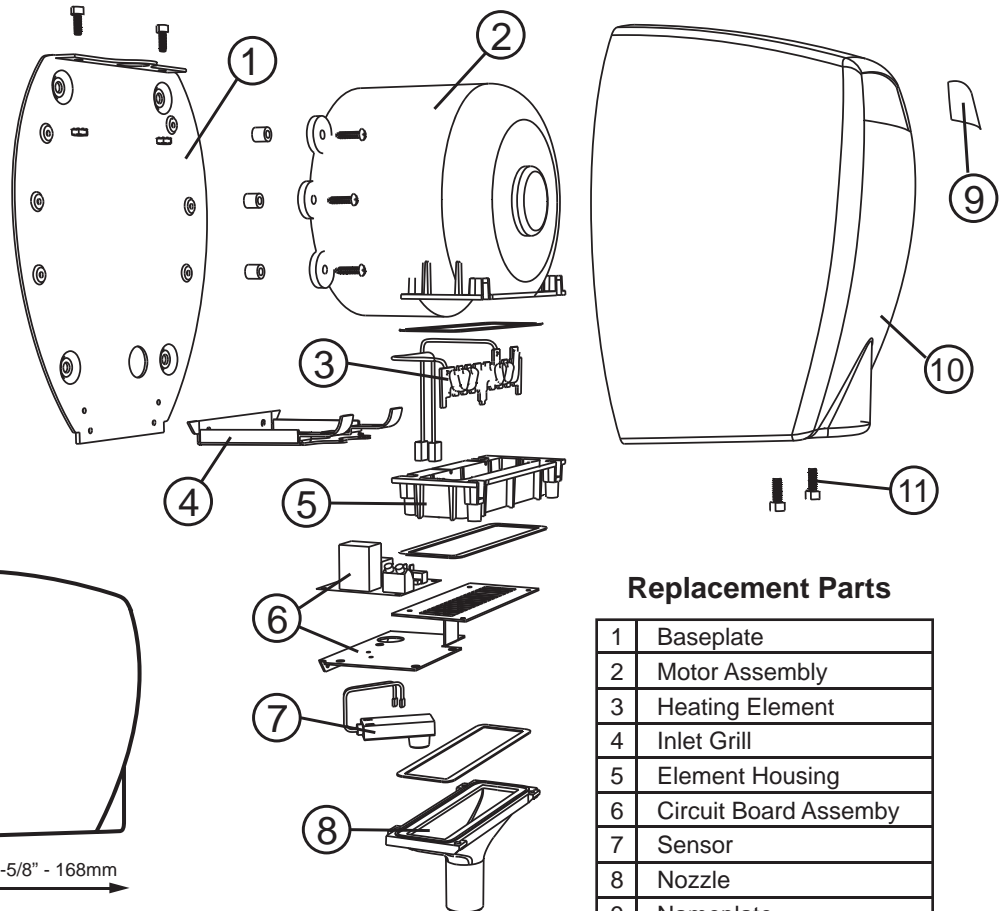
Unsurpassed drying speed – Blows water off hands and evaporates residual moisture with ultra-high velocity warm air. Dries completely in 10 seconds
Universal voltage – Auto-sensing circuit instantly adjusts to 115, 208 or 230 volts
Cast iron cover – 1/4-inch thick cast iron with porcelain enamel finish for the ultimate in durability
Compact, modern design – Elegant housing; the smallest high-velocity hand dryer on the market
Environmentally friendly – Uses 1/6 the energy of conventional hand dryers and costs 25 times less than paper towels to operate
Long lasting - Virtually indestructible cover and high quality mechanism warranted for 10 years



DIMENSIONS



Distance from bottom edge of dryer to floor:			
Men	47 in	119 cm	
Women	44 in	112 cm	
Children 8-10 years	35 in	89 cm	
Children 11-13 years	38 in	97 cm	
Children 14-16 years	44 in	112 cm	
Disabled	36 in	91 cm	



Replacement Parts

1	Baseplate
2	Motor Assembly
3	Heating Element
4	Inlet Grill
5	Element Housing
6	Circuit Board Assembly
7	Sensor
8	Nozzle
9	Nameplate
10	Cover
11	Tamper-proof screw
	Tamper-proof key



www.comaccorporation.com
 P.O. Box 8287, Warwick, RI 02888

Tel: 401-461-7900 • 800-977-5306 • Fax: 401-461-7700