

CADET™ EL 1.6/PA

2292.100

- Vitreous china
- Low-consumption (6.0 Lpf/1.6 gpf)
- Elongated bowl
- Pressure-assisted siphon jet flush action
- Side-mounted chrome trip lever
- Close-coupled flushometer tank*
- Speed Connect™ tank/bowl coupling system
- 2 bolt caps
- Fully-glazed trapway
- 100% factory flush tested

3081.017 Bowl

4086.100 Tank

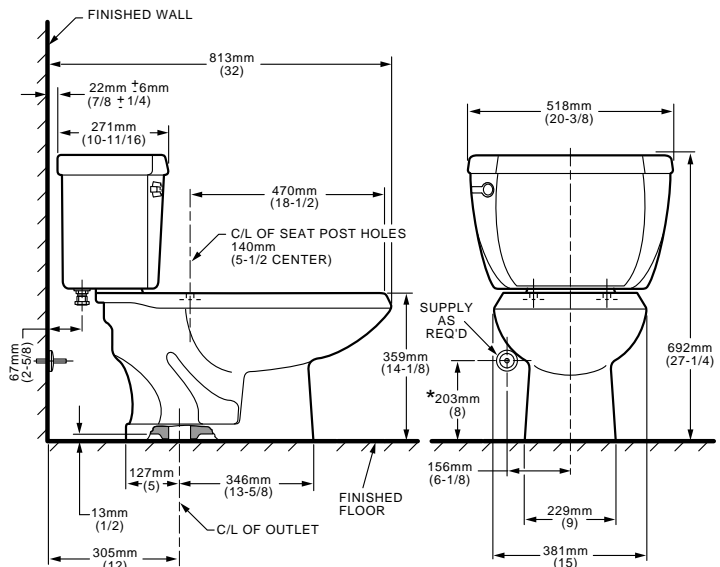
Nominal Dimensions:

813 x 518 x 692mm
(32" x 20-3/8" x 27-1/4")

Fixture only, seat and supply by others

Hydraulic performance, water surface area, trap seal depth, ballpass diameter, and all fixture dimensions meet or exceed ANSI Standard A112.19.2 requirements.

Recommended static pressure range
20 psi - 80 psi



NOTES:

THIS COMBINATION IS DESIGNED TO ROUGH-IN AT A MINIMUM DIMENSION OF 305MM (12") FROM FINISHED WALL TO C/L OF OUTLET.
* DIMENSION SHOWN FOR LOCATION OF SUPPLY IS SUGGESTED.
SUPPLY NOT INCLUDED WITH FIXTURE AND MUST BE ORDERED SEPARATELY.
FOR ADDITIONAL INFORMATION REFER TO INSTALLATION INSTRUCTIONS SUPPLIED.
IMPORTANT: Dimensions of fixtures are nominal and may vary within the range of tolerance established by ANSI Standard A112.19.2
These measurements are subject to change or cancellation. No responsibility is assumed for use of superseded or voided pages.

To Be Specified

- Color:
- Seat: American Standard #5324.019 "Rise and Shine" (with easy to clean lift-off hinge system) solid plastic closed front seat with cover. See page TBU-001.
- Seat: American Standard #5311.012 "Laurel" molded closed front seat with cover. See page TBU-001.
- Seat: Pressalit seats for American Standard, closed front seat with cover (thermoset compound material). See pages TBU-002 through TBU-005.
- Alternate Seat:
- Supply with stop:

* Flushometer tank system by Flushmate® Div. of Sloan Valve Co.