

**ANTIQUITY™ ROUND FRONT TOILET**

**2264.017**

- Vitreous china
- Low-consumption (6.0 Lpf/1.6 gpf)
- Round front siphon action bowl
- Close-coupled tank
- Turn-of-the-Century detailing on tank and bowl
- Side-mounted antique chrome trip lever with ceramic handle insert
- 2 bolt caps
- Fully-glazed trapway
- 100% factory flush tested

**3093.013 Bowl**

**4094.015 Tank**

Nominal Dimensions:

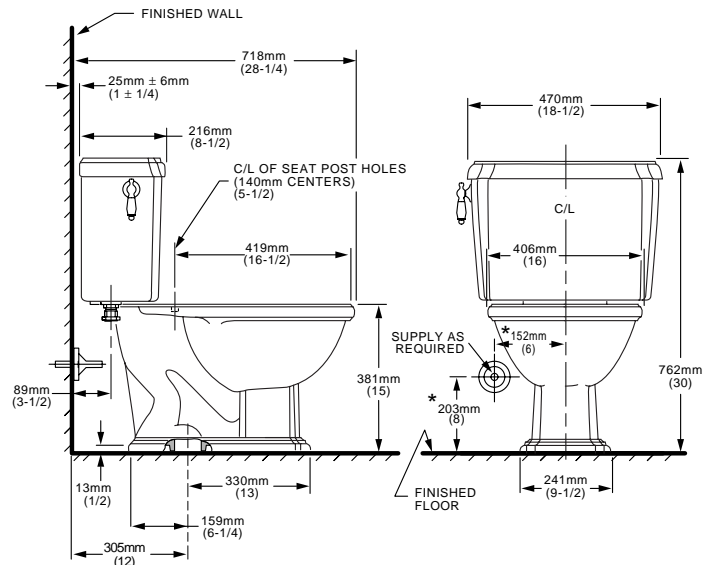
718 x 470 x 762mm  
(28-1/4" x 18-1/2" x 30")

Fixture only, seat and supply by others

**Compliance Certifications -**

**Meets or Exceeds the Following Specifications:**

- ASME A112.19.2M (and 19.6M) for Vitreous China Fixtures - includes Flush Performance, Ball Pass Diameter, Trap Seal Depth and all Dimensions



**NOTES:**

THIS COMBINATION IS DESIGNED TO ROUGH-IN AT A MINIMUM DIMENSION OF 305MM (12") FROM FINISHED WALL TO C/L OF OUTLET.

\* DIMENSIONS SHOWN FOR LOCATION OF SUPPLY ARE SUGGESTED.

SUPPLY NOT INCLUDED WITH FIXTURE AND MUST BE ORDERED SEPARATELY.

IMPORTANT: Dimensions of fixtures are nominal and may vary within the range of tolerance established by ANSI Standard A112.19.2.

These measurements are subject to change or cancellation. No responsibility is assumed for use of superseded or voided pages.

**To Be Specified**

- Color:  White  Bone  Silver  Shell  
 Linen  Black
- Seat: American Standard #5322.011 "Rise and Shine" (with easy to clean lift-off hinge system) solid plastic closed front seat with cover. See page TB-001.
- Seat: American Standard #5308.014 "Laurel" molded closed front seat with cover. See page TB-001.
- Alternate Seat:
- Supply with stop: