

LED FLEXBRITE CUSTOM CUT

LED Flexbrite is a vibrant, long lasting and cost effective alternative to traditional incandescent rope light consuming 85% less energy and lasting 3 to 5 times longer (up to 100,000 hours average life). This linear lighting product uses the highest grade PVC available with a newly developed UV inhibitor to help ensure the longevity of the rope light. Order LED Flexbrite in custom cut pieces to the nearest cutting increment to ensure UL2388 compliance. American Lighting is certified to make custom cut lengths at our factory for your convenience and code compliance needs.



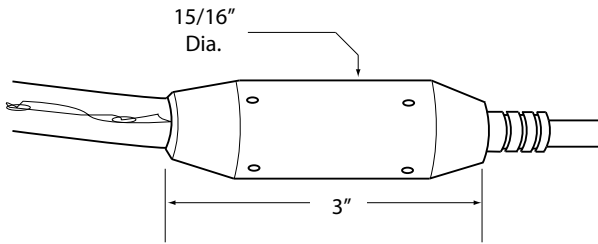
FEATURES

- Indoor/Outdoor rated
- Cost effective lighting for a variety of applications
- Produces virtually no heat for maximum safety
- Power cord and end cap connections are made at the factory per order for UL compliance
- Order to the nearest cutting increment – every 36" for Blue, Green, Cool White and Ultra Warm White; 60" for Amber, Red and Yellow
- Highest quality PVC with UV inhibitor to maximize life



BILL OF MATERIALS

- Determine length needed to the nearest cutting increment (3' for Blue, Cool White, Green and Ultra Warm White; 5' for Amber, Red and Yellow)
- Order one ULR-CONKIT-LEDSHELL for each non-extendable run up to 150 feet
- Order mounting track for straight runs (recommended) and mounting clips as needed



Factory assembled connector

ORDERING INFORMATION

PRODUCT

ULRL-LED

**LED
Flexbrite**



AM-CC = Amber
BL-CC = Blue
CW-CC = Cool White
GR-CC = Green
RE-CC = Red
UWW-CC = Ultra Warm White
YE-CC = Yellow

REQUIRED

ULRL-CONKIT-LEDSHELL*

*Required for each custom cut.

OPTIONAL

DL

**CLIP/SCREW
TRACK-4**

ACCESSORIES

-		ULRL-CONKIT-LEDSHELL	UL Listed factory assembled connector kit for use with CUSTOM CUT 1/2"120V LED Flexbrite only
-		DL-CLIP/SCREW	Clear "U" shaped mounting clip that securely holds rope light in place
-		DL-TRACK-4	Four foot clear mounting track with UV rating for outdoors; recommended for use with straight line installations

For custom cut 12V LED Flexbrite, order LED-DL-WH-12 (6400°K White) or LED-DL-UWW-12 (2700°K White). Bulk reel length is 150 feet; maximum single run is 30 feet; 0.77 watt/foot. Use with LED-DL-CONKIT-NP and 12V DC power supply, such as LED-DR-12. Compatible with most Rope Light accessories on page 87.

TECHNICAL SPECIFICATIONS

Voltage	120V, 60Hz AC operation (1.6A inverter converts AC to DC)
Construction	Heat resistant clear PVC housing with LEDs every 1", vertical mount
Dimensions	1/2" diameter
Cuttability	BL, CW, GR and UWW cuttable every 3 feet; AM, RE and YE cuttable every 5 feet
Wattages	BL, CW, GR and UWW = 0.77 watt per foot; AM, RE and YE = 0.47 watt per foot
Maximum run	150 feet
Switching	Provide switched outlet for On/Off and dimming control
Linking	Custom cuts are not linkable. Cutting, splicing or repairing LED Flexbrite custom cuts voids the UL2388 rating
Packaging	Carton and/or polybag
LED specs	60,000 hours average LED life (CW and UWW); 100,000 hours average LED life for all other colors
Dimmers	Dimmable with most standard incandescent, low voltage magnetic and low voltage electronic dimmers
Diffuser	Clear PVC jacket

